

# SPECTRUM

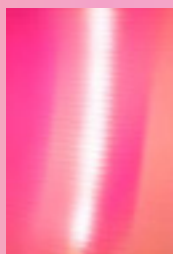


**cc-tapis®**

ISSUE 2020

PATRICIA URQUIOLA  
DAVID/NICOLAS  
MAARTEN DE CEULAER  
JEAN-MARIE MASSAUD  
GERMANS ERMIČS  
STUDIOPEPE.  
BETHAN LAURA WOOD  
MARTINO GAMPER  
CRISTINA CELESTINO  
MAE ENGELGEER  
GARTH ROBERTS  
FAYE TOOGOOD

cc-tapis® cc-tapis® cc-tapis® cc-tapis® cc-tapis® cc-tapis® cc-tapis® cc-tapis® cc-tapis® cc-tapis®



cc-tapis:  
an italian brand  
with diverse cultural  
roots reflected  
in the company's  
handknotted ethos:  
born in france,  
designed in milan,  
produced in nepal.

# CUL TURE

cc-tapis produces  
contemporary handknotted  
rugs which are created  
in nepal by expert  
tibetan artisans.  
innovating through  
a new approach  
to traditional methods,  
a strong respect  
for the materials  
and for the culture  
of this ancient craft  
makes each rug unique.

at the center of every  
project is design.  
cc-tapis works closely  
with multi-disciplinary  
designers, each bringing  
their own ideas  
and cultural identity:  
a source of cross  
cultural influences  
enriching the company  
and the value  
of the product.

# KNOW HOW

all cc-tapis handknotted  
rugs are completely  
made by hand by tibetan  
artisans. the entire  
process follows ancient  
production-techniques  
of tibetan craftsmanship.  
only natural materials  
are used.

# BE SPOKE

cc-tapis gives clients  
the freedom to create  
custom pieces  
with the dimensions,  
colors and even  
the materials  
of their choice.  
at the heart  
of this process  
is the cc-tapis  
design-lab assisting  
clients, architects  
and interior designers.



# RE SPON SI BIL ITY

the founders of cc-tapis created cc-for education, a non-profit organisation with the ambition of giving an education to school children and university students in nepal. the sale of every cc-tapis rug supports the foundation.

# BRAND VALUE

the individual attention, consideration and thought that goes into every rug is also conveyed in all aspects of the company. at cc-tapis every detail is curated creating a cohesive identity and a unique experience for our clients.

# SPECTRUM

alex proba  
bethan laura wood  
chiara andreatti  
christophe delcourt  
cristina celestino  
david/nicolas  
elena salmistraro  
eligo studio  
faye toogood  
federico pepe  
garth roberts  
germans ermičs  
jean-marie massaud  
leonardo talarico  
ludovica+roberto palomba  
maarten de ceulaer  
mae engelgeer  
martino gamper  
parisotto + formenton  
patricia urquiola  
rooms studio  
steven holl  
studio klass  
studio zaven  
studiopepe.  
zanellato/bortotto





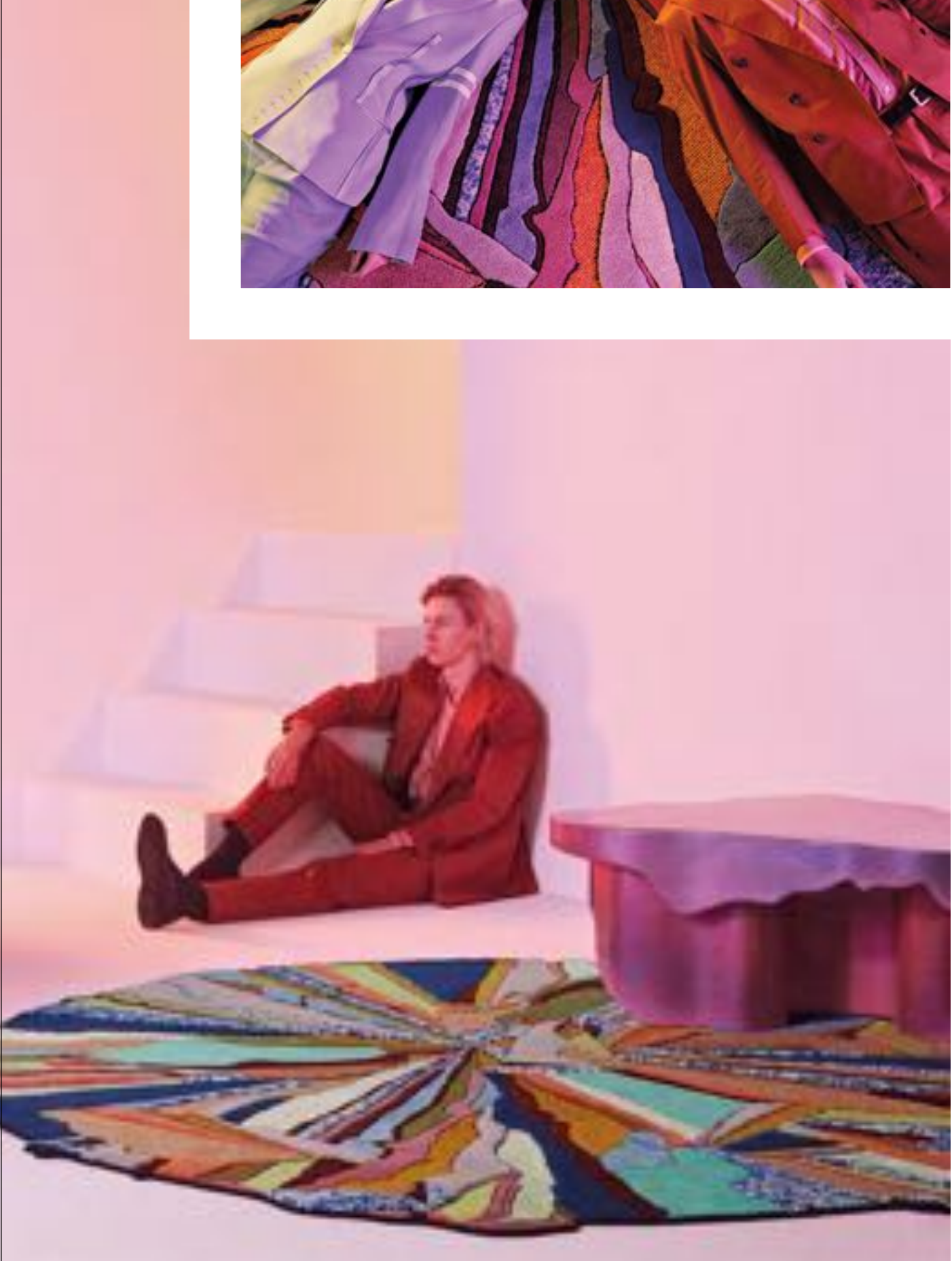


INTERIOR  
WITH  
TABLE  
designed  
by Faye Toogood  
discover the collection  
on page 87



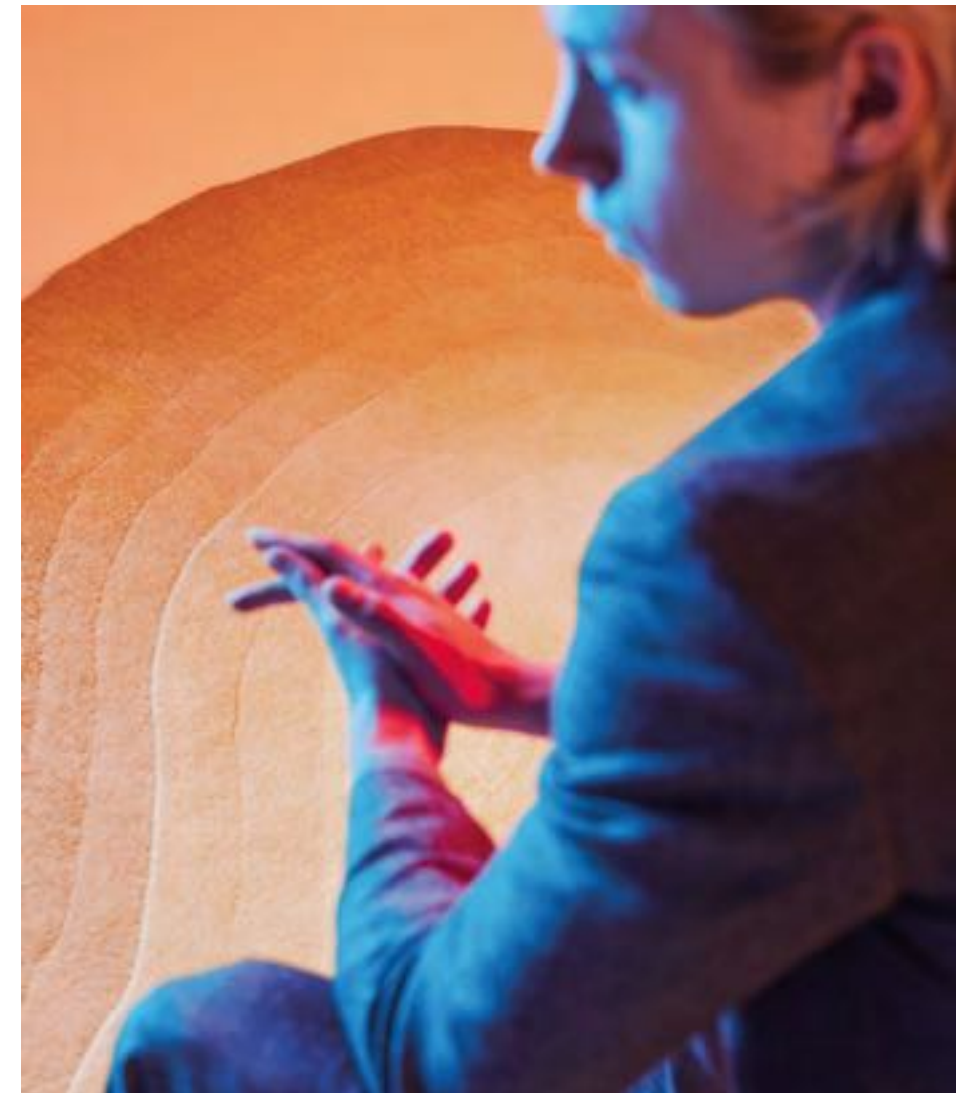


SUPER ROCK, SUPER ROUND HOT  
designed by Bethan Laura Wood  
discover the collection on pages 52, 98





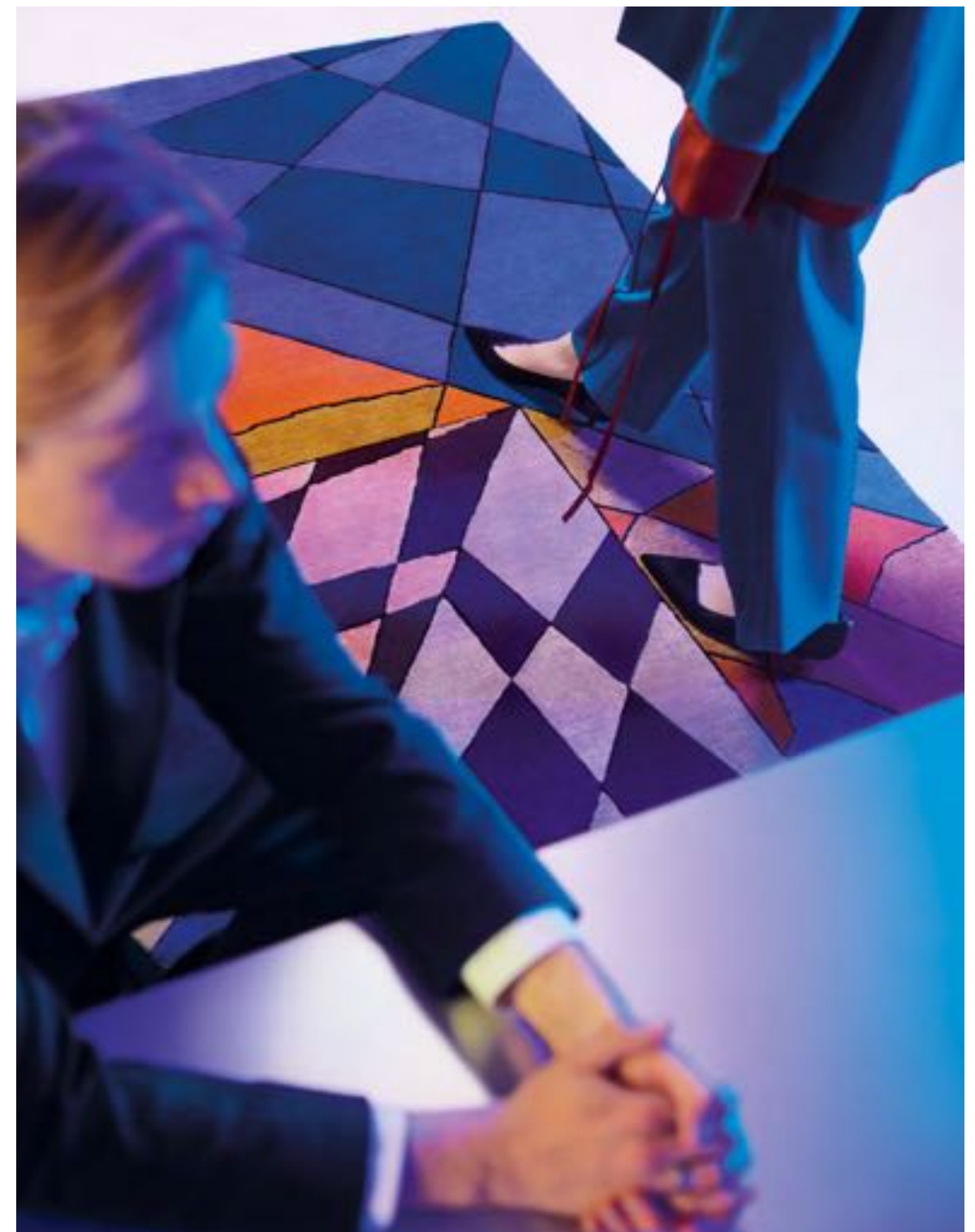
**CHROMA RADIATE, CHROMA SPILL**  
designed by Germans Ermičs  
discover the collection on pages 32, 132







**XEQUER E**  
**designed by Martino Gamper**  
discover the collection on pages 22, 104



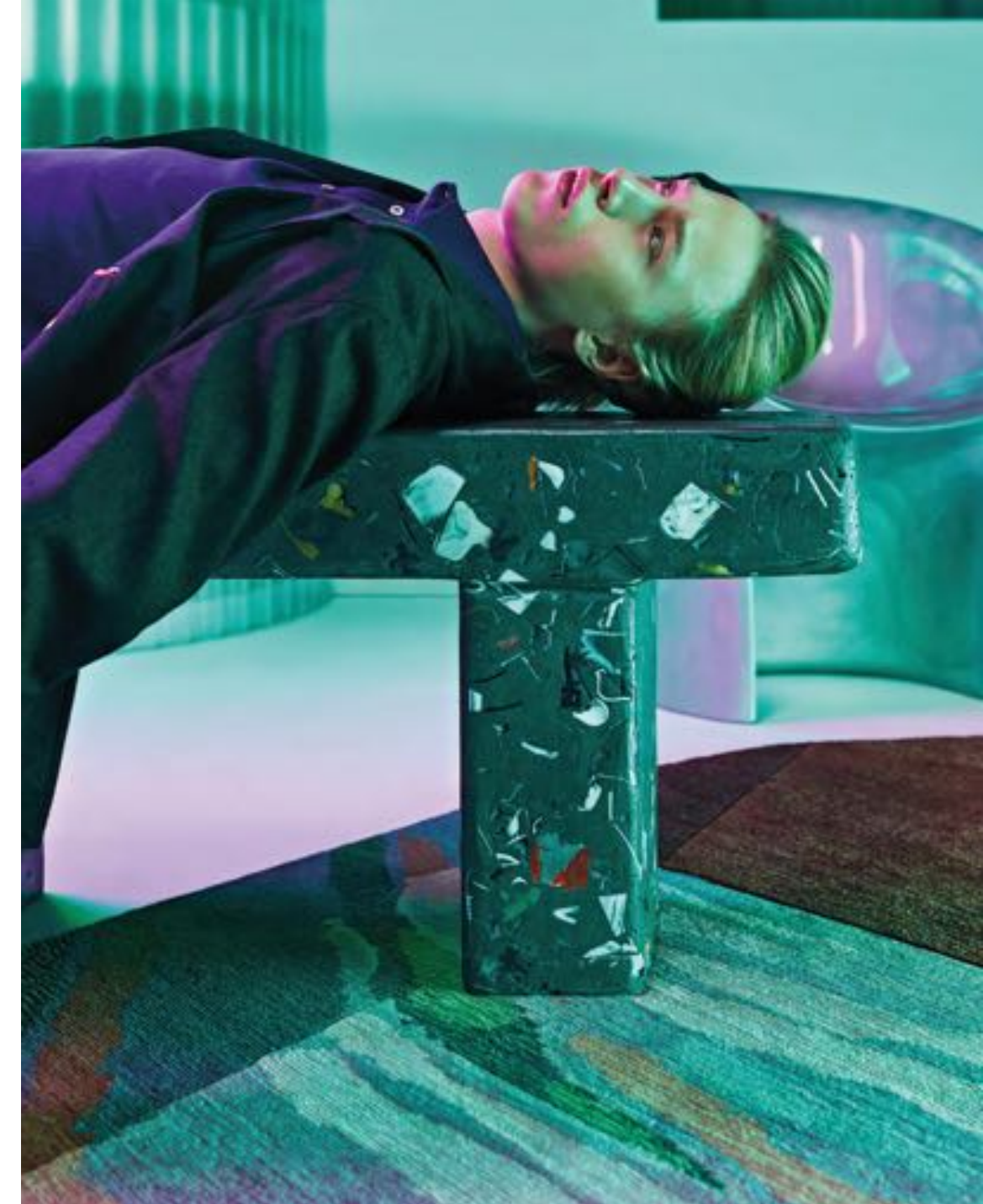




PALMETTE LAZER CANNON  
 LILLA AND PINK  
 KAZAK SPACE SHIFTER  
 TABRIZ DESTROYER  
 designed by the cc-tapis design-lab  
 discover the collection on pages 8, 124







**FORDITE 3**  
designed by **Patricia Urquiola**  
discover the collection on pages 20, 92



**FORDITE 2**  
designed by  
**Patricia Urquiola**  
discover the collection  
on pages 20, 92





# HIGHLIGHTS

SPECTRUM, or perhaps Spect/Room. In optical terms, according to the encyclopaedia, a SPECTRUM is simply “the luminous band composed of the sequence of colours of the rainbow”. ROOM, on the other hand, is “a chamber; each of the spaces that make up an apartment, and by extension, the set of furniture used to decorate those spaces”. Light, rainbow, furniture, space: if there were a periodic table of the key elements in the life and works of CC-TAPIS, there is no doubt that these four would feature strongly.

From these reflections comes the key to the staging of this season’s catalogue, the true constant thread running through the imagery you are about to see on these pages. Light as an architectural and decorative element, be it by its absence or its presence, and as the ideal means of bringing colour, every colour. For each colour, a room. For each room, a rug.

What better surface on which the interplay of colours mentioned above could land? A RUG is by its very nature a palette with a dominant colour, and an organic artefact made of living, evolving matter. CC-TAPIS, as all its friends and acquaintances know, lives for the different collaborations and worlds that come together, the rooms, all connected with one another in some way, always ready to let the light filter through from outside.

Further confirmation comes from the statement, “BORN IN FRANCE. DESIGNED IN ITALY. PRODUCED IN NEPAL.” A spectrum of ideas, a rainbow of materials combining different skills and crafts, a series of rooms that are both experiences and lives, colourful and thick with nuances, just like the personal stories of the designers and other talents involved in this collective adventure.

Which leads us on to another fundamental detail that we find in this work, in the shoot for this new campaign: the human element. Because within the rooms are people: people who give these spaces life, who shape their character through the eternal exercise in taste that is human habitation. This exercise has been repeated regularly down the ages, but never in quite the same way, giving, instead, a different colour to each era it has spanned, and will continue to span. Because, at the end of the day, it is people who see colour, and who see themselves in a colour; it is people who, by interacting with the light, can somehow define it, transform it, warm or cool it. Just as a designer does when tackling a new design and bringing it to life, or a craftsman working with a new material to be shaped. Just as we all ultimately do, finding ways to design and craft the things that happen in our lives.

Federico Sarica

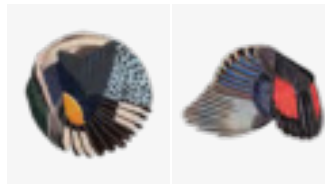


# NEWS 2019

## feathers

p. 4

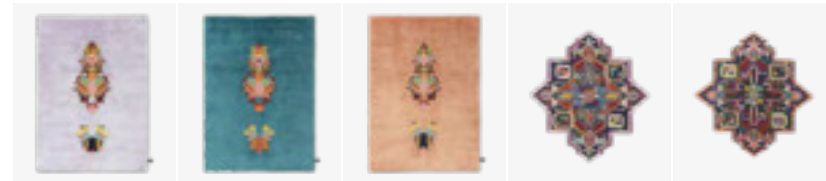
Maarten De Ceulaer



## rug invaders

p. 8

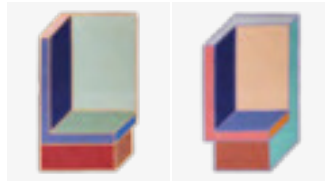
cc-tapis design-lab



## visioni

p. 14

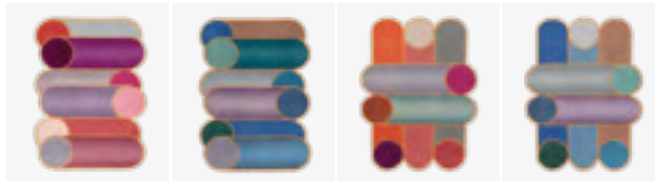
Patricia Urquiola



## rotazioni

p. 16

Patricia Urquiola



## fordite

p. 20

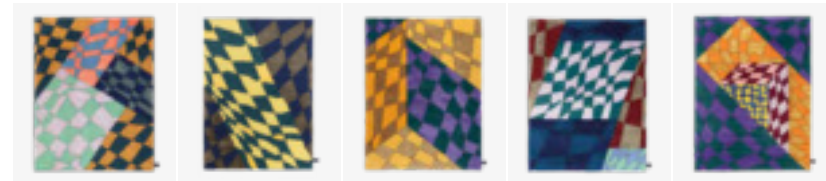
Patricia Urquiola



## xequer

p. 22

Martino Gamper



## plasterworks

p. 26

David/Nicolas



## tidal

p. 32

Germans Ermics



## lunar addiction

p. 38

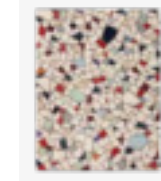
Studiopepe.



## parvata

p. 42

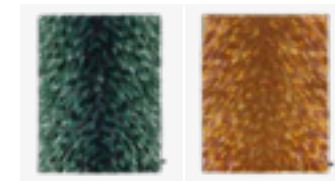
Jean-Marie Massaud



## chand

p. 46

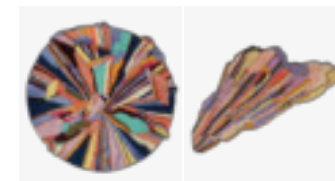
cc-tapis design-lab



## envolée

p. 48

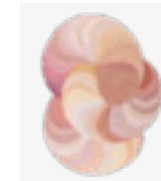
Cristina Celestino



## super fake

p. 52

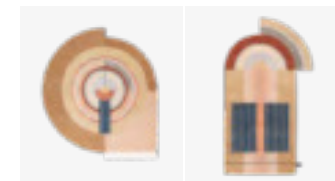
Bethan Laura Wood



## slinkie

p. 54

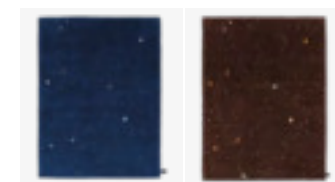
Patricia Urquiola



## bliss

p. 56

Mae Engelgeer



## after party

p. 60

Garth Roberts







ROUND STANDARD



250x250 cm

FREEFORM STANDARD



200x133 cm

# FEATHERS

SIGNATURE COLLECTION

Maarten has always had an affinity for birds and years ago he came across the illustrations by John James Audubon and John Gould which have been inspiration ever since. Inspiration which he has tweaked, morphed and abstracted into a collection of ultra-detailed rugs.

designed by  
Maarten De Ceulaer

in the catalogue since 2019 / details on page 90





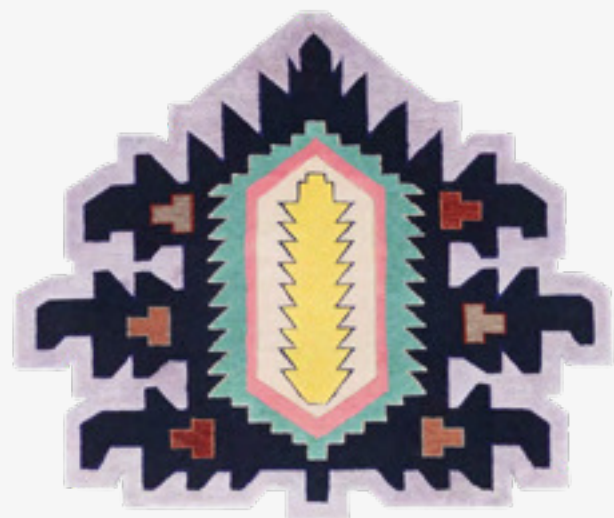
# RUG INVADERS

NEW CLASSIC COLLECTION

designed by  
cc-tapis design-lab

PALMETTE LAZER CANNON LILLA

PALMETTE LAZER CANNON PINK



135x115 cm



135x115 cm

An inter-galactic, shape-shifting army of contemporary hand-knotted rugs taking inspiration from traditional rug motifs and icons. The Rug Invaders have broken-free from their historical past and are now out-of-scale and from out-of-space redefining how rugs are used within a space.

TABRIZ DESTROYER CHECK



220x230 cm

in the catalogue since 2019 / details on page 124





KAZAK SPACE SHIFTER STANDARD



155x145 cm

USHAK INVADER STANDARD



145x145 cm



THE MOTHERSHIP LILLA



170x240, 230x300 cm





A ELECTRIC



190x300 cm

A new color palette for the iconic rugs designed by Patricia Urquiola, where the black outlines have taken-on a vibrant glow which contrast with charged and contemporary colors. Two rugs that testify to the desire to give value to ancient production techniques, adding a contemporary breath to them.

in the catalogue since 2016  
details on page 102

# VISIONI

SIGNATURE COLLECTION

designed by  
Patricia Urquiola

B ELECTRIC



180x300 cm



A ELECTRIC PINK



220x300 cm

A ELECTRIC BLUE



220x300 cm

# ROTAZIONI

## SIGNATURE COLLECTION

Rotazioni plays on the repetition of overlapping cylindrical forms that emphasize the circle as the matrix of the design. A scale of pastel colors and chromatic contrasts insinuate the gradient on the surface of the cylinders creating a three dimensional effect. This enhances the volume and dynamic composition of the design: from this Rotazioni, which translated means Rotations, was born.

designed by  
Patricia Urquiola

in the catalogue since 2017 / details on page 96







B ELECTRIC PINK



180x240 cm

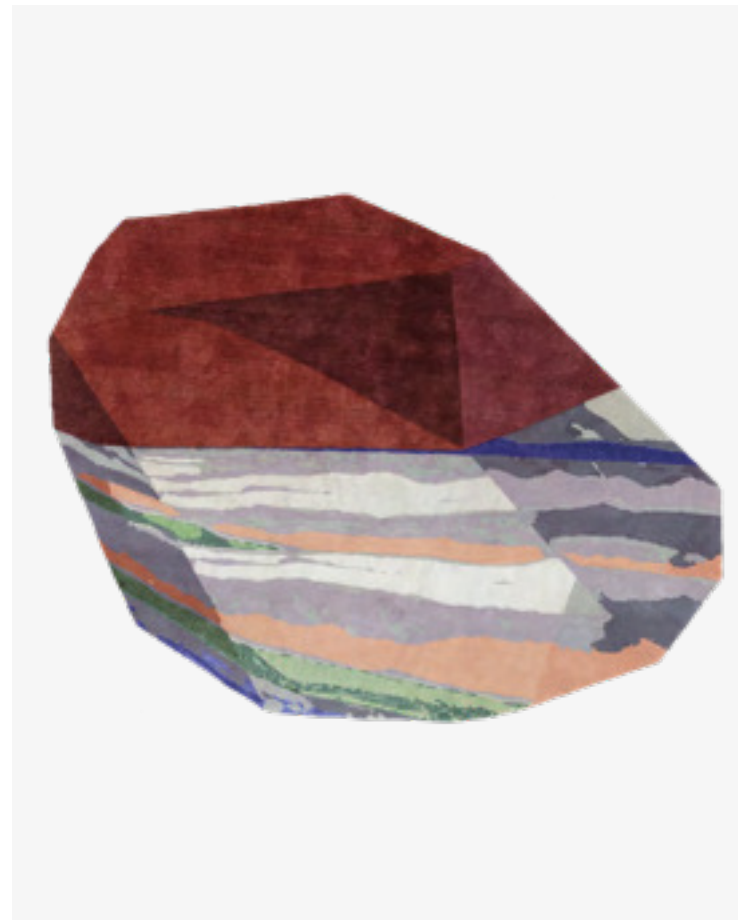
in the catalogue since 2017  
details on page 96

# FORDITE

SIGNATURE COLLECTION

designed by  
Patricia Urquiola

3 STANDARD



230x300 cm

Fordite is a byproduct of the car manufacturing industry: automotive paint that has built up over time and baked repeatedly. Inspired by this material, Patricia Urquiola uses excess materials left over from cc-tapis regular production process to create the colorful layers.

2 STANDARD



200x300 cm

in the catalogue since 2019  
details on page 92







# XEQUER

## SIGNATURE COLLECTION

Multiple planes of chequerboards clash and crackle together whilst bright, piercing colours intertwine and overlap in a psychedelic world created by Gamper. The materials interplay in the same way as the color-blocked grids, resulting in a brilliant collision of textures and shades.

designed by  
Martino Gamper

A STANDARD



170x240, 230x300 cm

B STANDARD



170x240, 230x300 cm

in the catalogue since 2019  
details on page 104





C STANDARD

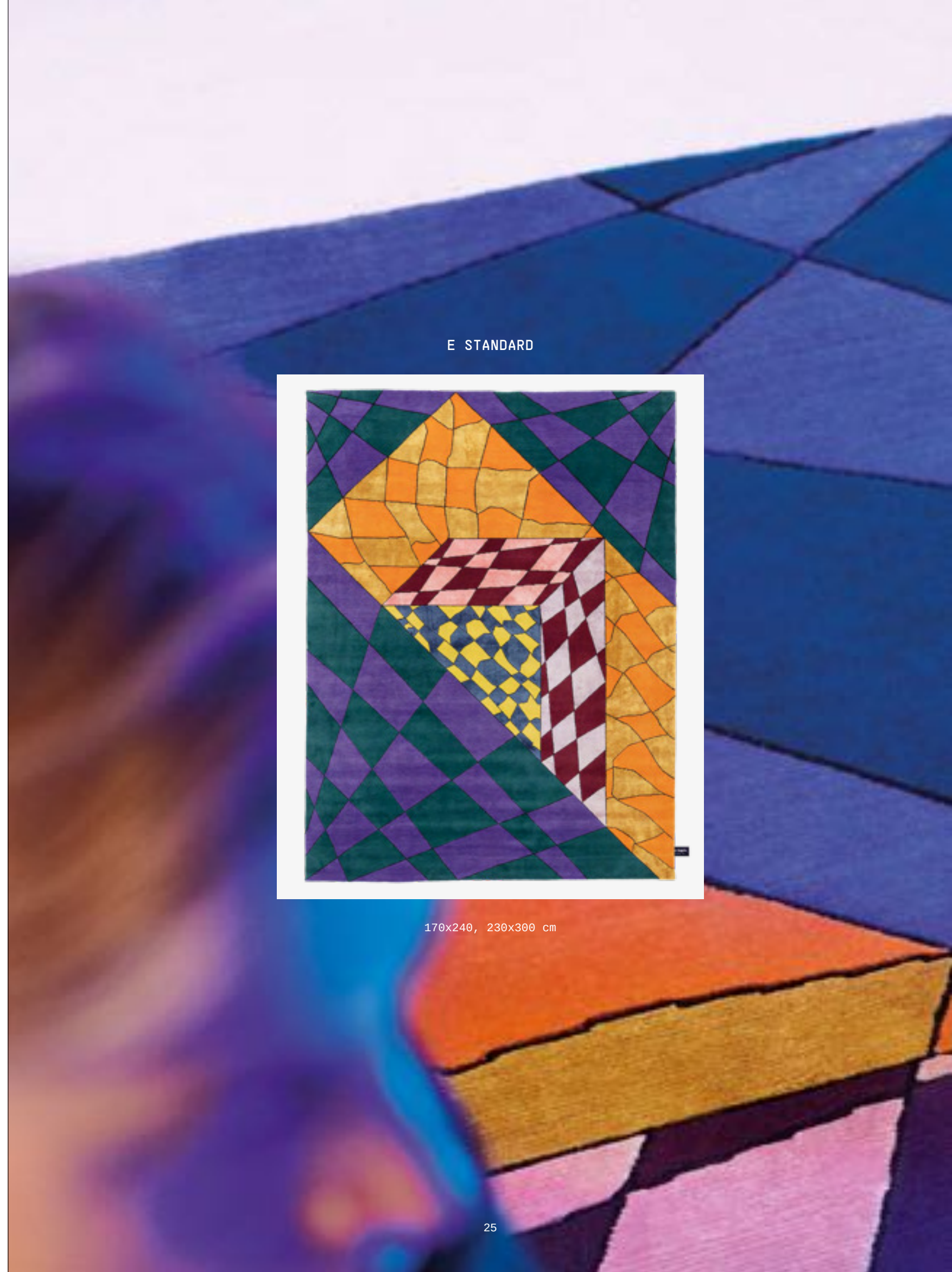


170x240, 230x300 cm

D STANDARD



170x240, 230x300 cm



E STANDARD



170x240, 230x300 cm



# PLASTERWORKS

## ARCHITECTURAL COLLECTION

designed by  
David/Nicolas

During a long lunch at Kaléo, a restaurant designed by David/Nicolas in Beirut, the triangle patterns that decorate the walls caught the eyes of the founders of cc-tapis, a detail which David/Nicolas translated into fine hand-knotted rugs for the Plasterworks Collection.



A BLACK&WHITE



170x300 cm

B BLACK&WHITE



170x180 cm

in the catalogue since 2019  
details on page 130



C BLACK&WHITE



250x270 cm

C STANDARD







PLASTERWORKS A STANDARD  
PLASTERWORKS C STANDARD



# TIDAL

## ARCHITECTURAL COLLECTION

designed by  
Germans Ermičs

ISLE STANDARD



250x250 cm

RETREAT STANDARD



230x230 cm

The Tidal Collection is a visual investigation into the relationship between texture, shape and color. A sophisticated gradient effect was created through an entirely new coloring system, combining threads of Himalayan wool in alternating saturations to achieve the simple and light effect.

CHROMA RADIATE STANDARD



250x250 cm

in the catalogue since 2019 / details on page 132









OVERFLOW STANDARD



230x300 cm

CHROMA SPILL STANDARD



230x300 cm



SQUARE STANDARD



250x250 cm

A constellation of deconstructed forms crash against one another and each rug is articulated by a series of contrasts: complex patterns against visual regularity; flat surfaces alongside three-dimensional components; rough versus smooth textures.

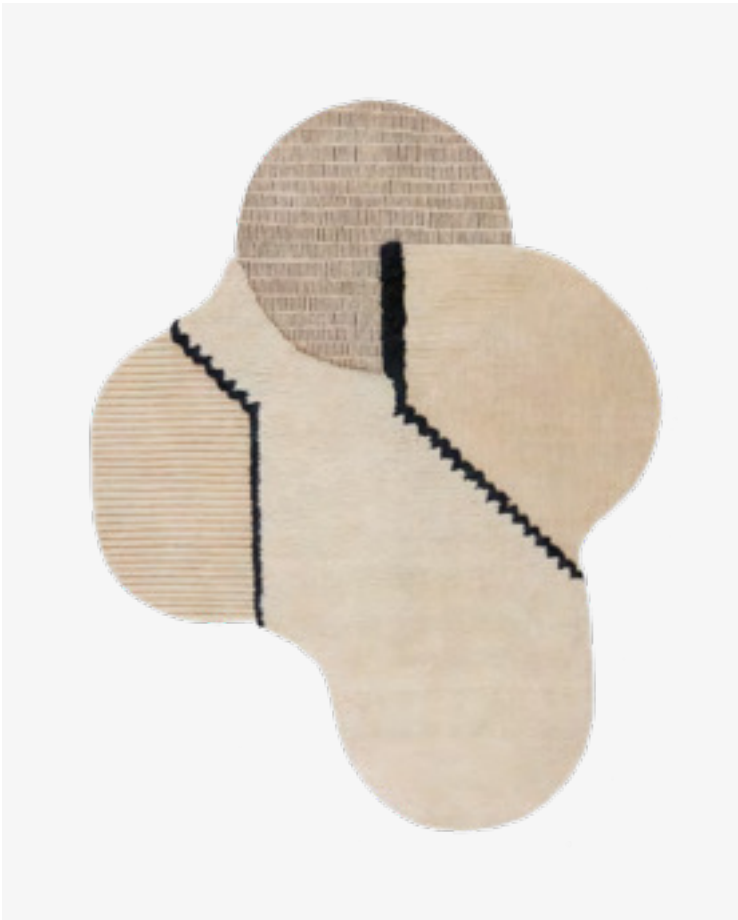
in the catalogue since 2019  
details on page 129

# LUNAR ADDICTION

ARCHITECTURAL COLLECTION

designed by  
Studiopepe.

RECTANGLE STANDARD



230x300 cm







LUNAR ADDICTION SQUARE STANDARD



DEER AT NIGHT  
300x230 cm

LUNAR ADDICTION RECTANGLE STANDARD



# PARVATA

## ARCHITECTURAL COLLECTION

A homage to the country it was created in, the name “Parvata” is the Nepali word for mountain and is produced by cc-tapis at the base of the Himalayas.  
A concept translated by the weavers to convey the natural wonders of Himalayan rock formations.

designed by  
Jean-Marie Massaud

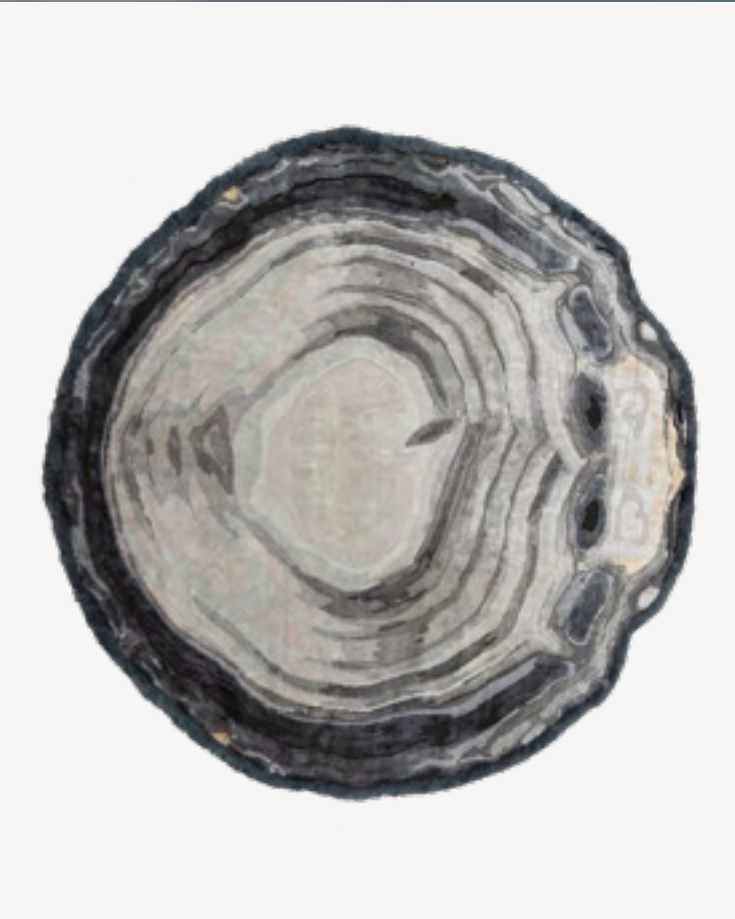
### STANDARD



230x300 cm

in the catalogue since 2019 / details on page 128

### ROUND



250x250 cm



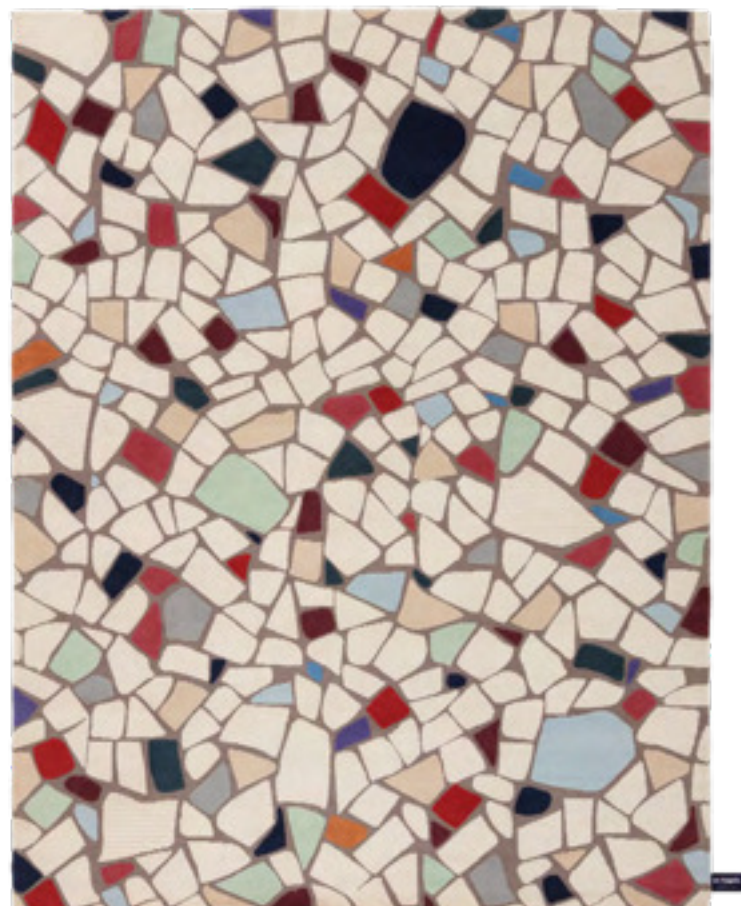




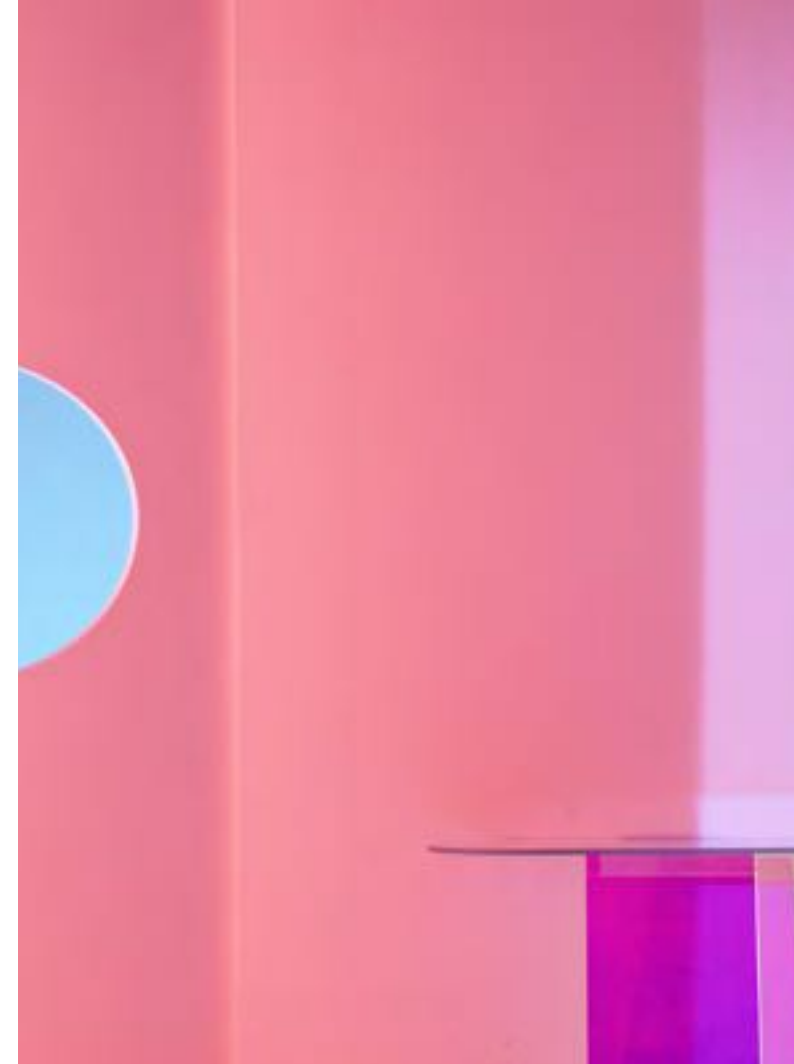
# CHAND

CONTEMPORARY COLLECTION

STANDARD



170x240, 230x300 cm

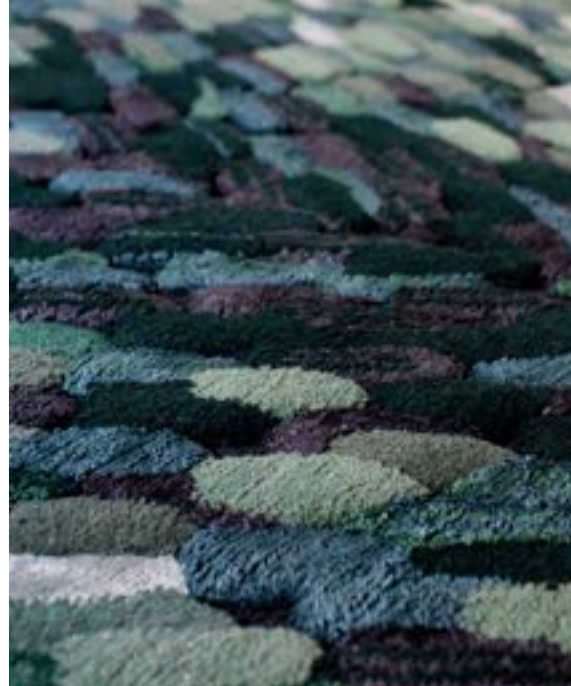


The Chand rug is inspired by the unusual story of Indian sculptor Nek Chand, a government official of Chandigarh, who in 1957 secretly started to build a garden in his spare time, in a national park where construction was forbidden. To do so, he started collecting materials from demolition sites around the city to build hundreds of ceramic-covered concrete sculptures of dancers, musicians, and animals, which became the residents of the Rock Garden of Chandigarh. Only discovered by the authorities in 1975, it was scheduled for demolition but due to public outcry the park was inaugurated as an official public space shortly after and can still be visited today.

in the catalogue since 2019  
details on page 108







# ENVOLÉE

## SIGNATURE COLLECTION

Envolée takes inspiration from one of the most delicate architectures present in nature: the wings of a butterfly. Observed under a microscope, their beauty is so sophisticated that it defies every type of description. They are ephemeral structures, characterized by iridescent, hypnotic and marvelous scales. The wings of lepidopterans butterflies look like brushstrokes, like paintings in motion. The elegance of their composition, under an attentive eye, has the consistency of a fabric. A consideration which lead Cristina Celestino to translate that which is not visible to the naked eye into a macro scale.

designed by  
Cristina Celestino

### FOREST



170x240, 230x300 cm

### AMBER



170x240, 230x300 cm

in the catalogue since 2018  
details on page 90





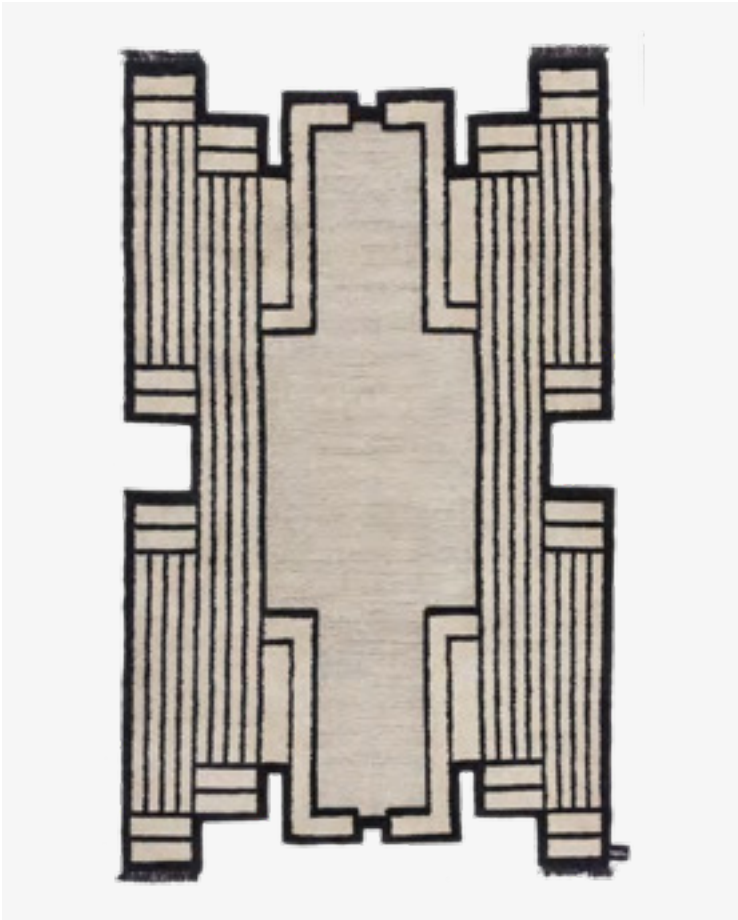
# ASMARA

SIGNATURE COLLECTION

designed by  
Federico Pepe

Named Asmara as a tribute to the capital of Eritrea, now recognized as a UNESCO World Heritage Site thanks to its modernist architecture, designed by visionary architects in the fascist colonial era. An urbanistic, innovative utopia applied to an African context, just like the two souls of this rug, one linear and modernist and the other warm, soft and textured.

STANDARD



180x300 cm

in the catalogue since 2018  
details on page 86





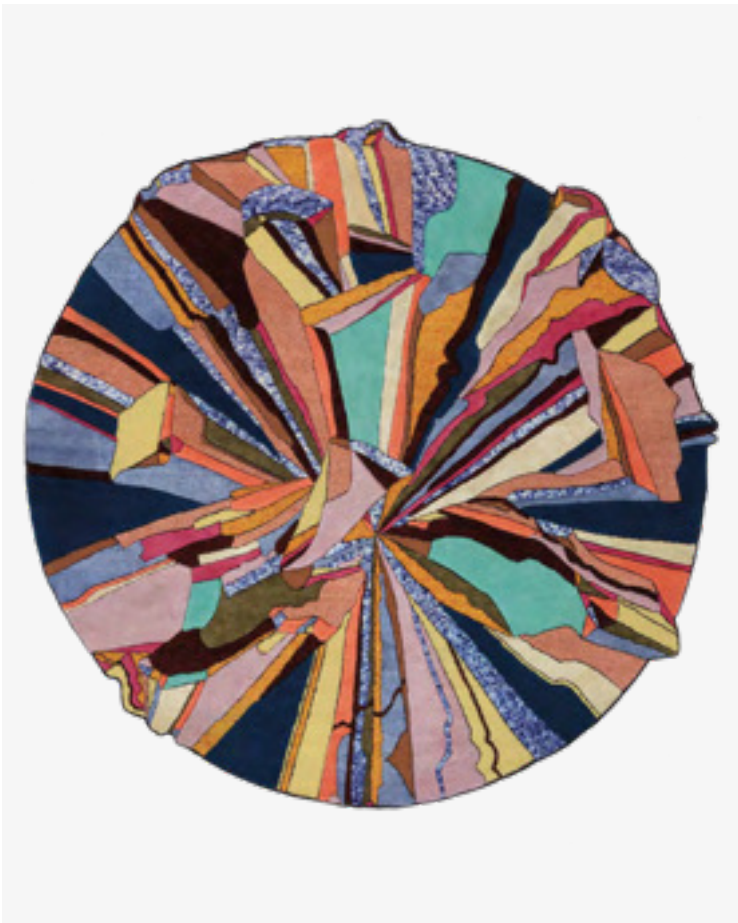
# SUPER FAKE

## SIGNATURE COLLECTION

A series of rugs inspired by the collision of the man-made with nature. Each based on a different rock form, whose surface patterns are created through the organic build-up of sediment through time and a combination of materials under pressure. Bethan uses the rock as a reference to explore the post instagram and 'snap chat world', where the fleeting two-dimensional image, collide with a physical and tactile reality, the hyper -, and super -, fake spill into our daily lives.

designed by  
Bethan Laura Wood

SUPER ROUND HOT



250x250 cm

SUPER ROCK HOT



250x250 cm

in the catalogue since 2018  
details on page 98







in the catalogue since 2018 / details on page 98

# SLINKIE

SIGNATURE COLLECTION

designed by  
Patricia Urquiola



TRIPLE SLINKIE PINK



223x300 cm

A design story revolving around color; a succession of chromatic evolutions developed in a composite universe of organic shapes. A digital drawing which allows every rug to display an evolution of colorful wool -sometimes unexpectedly- placed side by side, outlining multiple chromatic associations. A visual exercise aimed to transform the intangible idea of shade and hue into a finely produced and sophisticated product.



# BLISS

## SIGNATURE COLLECTION

Designed by Dutch textile designer Mae Engelgeer, the start of the Bliss Collection came from experimenting with color and rounded shapes. Mae tried to keep the playfulness of the Memphis movement in mind whilst mixing elements like pattern and form with different production techniques. Using high quality materials like Himalayan wool with pure silk makes part of the design literally glow, she refers to it as “jewellery” for interior spaces.

designed by  
Mae Engelgeer



## ULTIMATE STANDARD



233x250 cm

## BIG ULTIMATE



170x300 cm

in the catalogue since 2017  
details on page 88







# AFTER PARTY

SIGNATURE COLLECTION

designed by  
Garth Roberts

BROWN

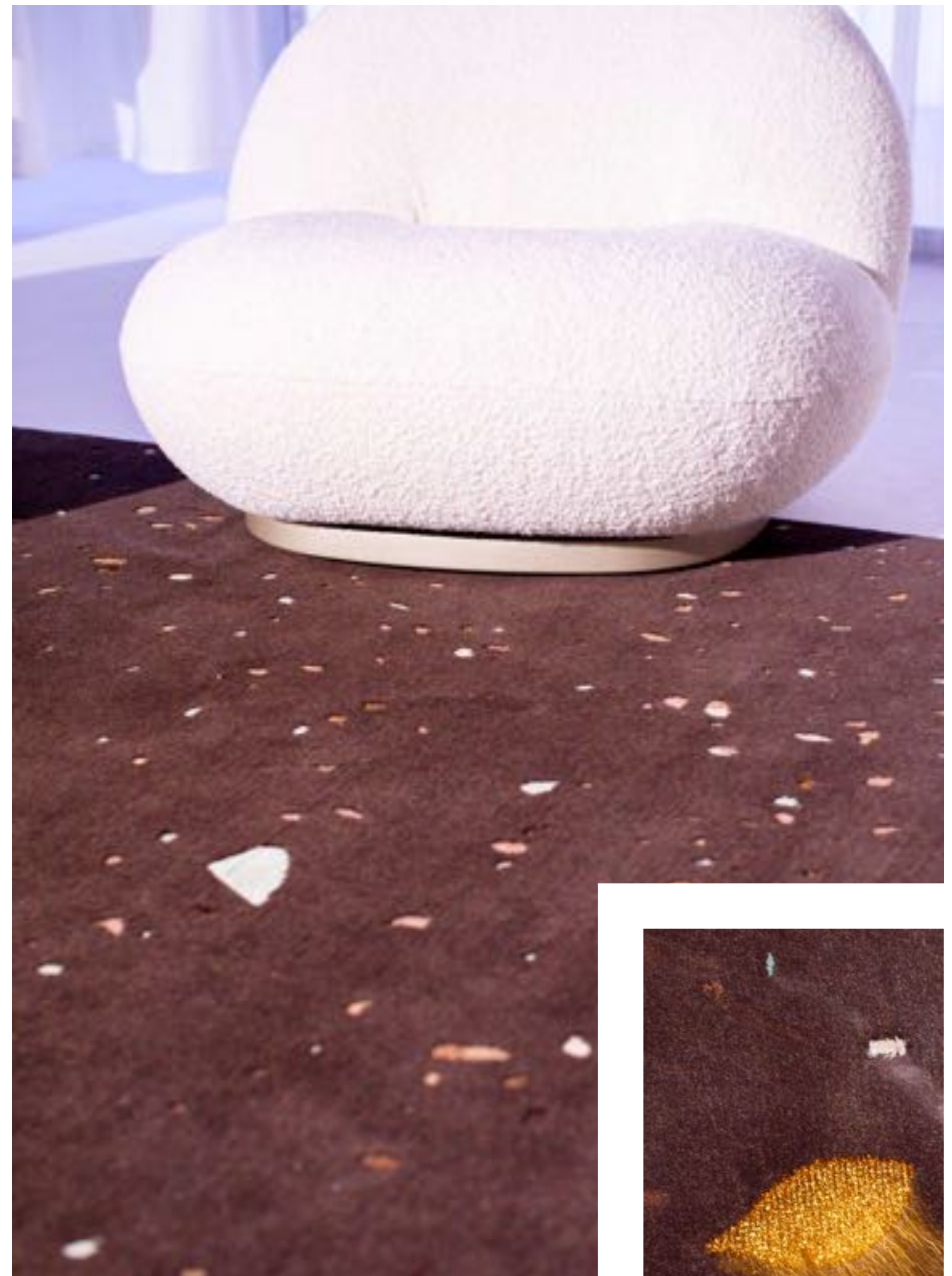


170x240, 230x300 cm



Exploring contemporary and traditional graphics and texture, the haphazard nature of the design was inspired by the world of celebration, confetti and life's fleeting moments. Creating a subtle and abstract graphic where the apparent randomness of the design has been created with the combination of Himalayan wool, pure silk and metallic fibers. A randomness which has been custom made and born through experimentation.

in the catalogue since 2017  
details on page 86









BLUE



170x240, 230x300 cm

in the catalogue since 2017  
details on page 86





# SEgni MINIMI

## OLDIE COLLECTION

Segni Minimi, which translated means “simple marks”, was originally a collection of drawings on paper by architect Giuseppe Di Costanzo. Essential, abstract and geometric designs where lines, figures and fields of color overlay each other.

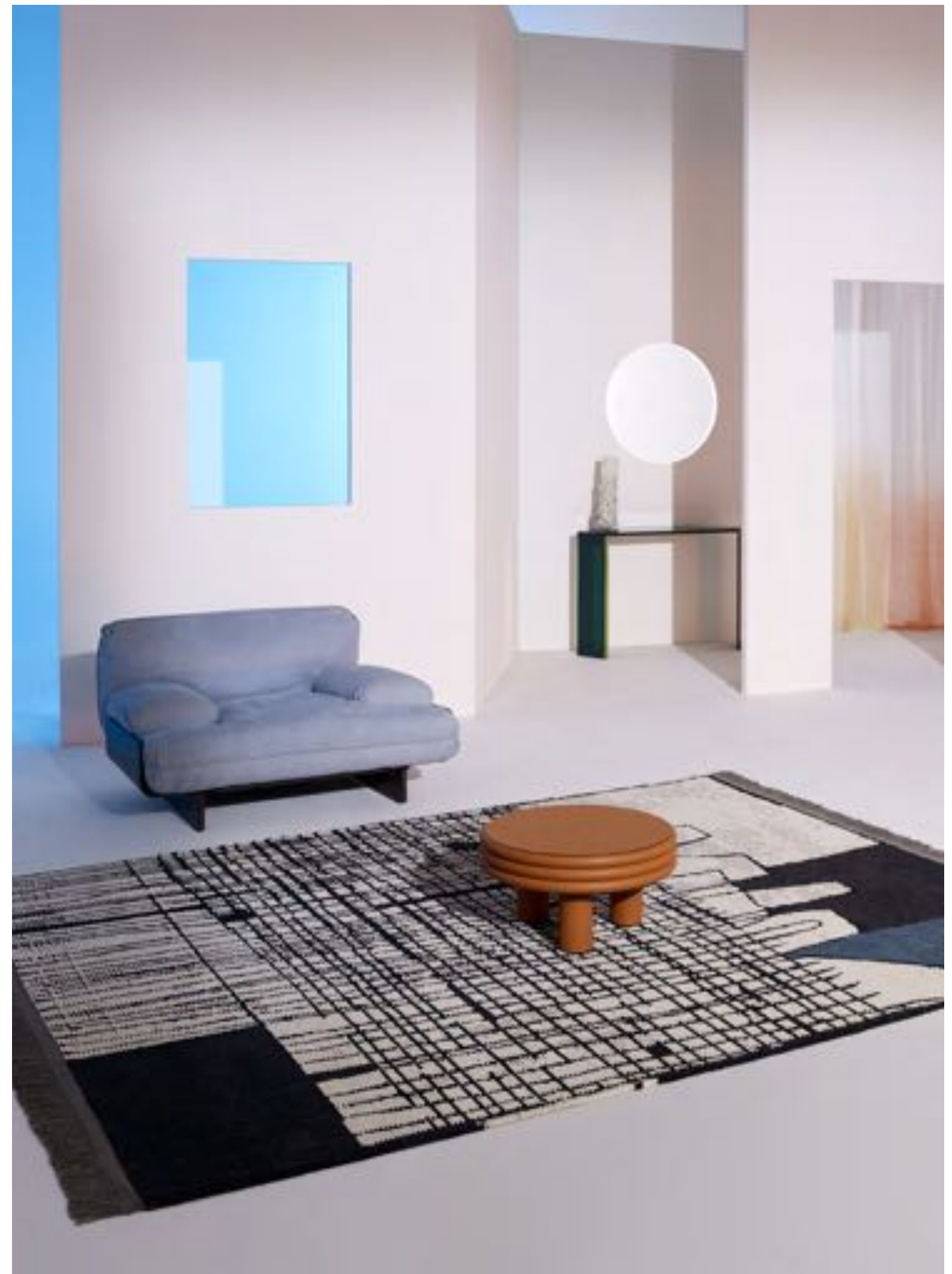
### PETROL



170x240, 230x300 cm

designed by  
Giuseppe Di Costanzo

in the catalogue since 2016 / details on page 116







# OLDIE SOIE

OLDIE COLLECTION

NATURAL WHITE



170x240, 230x300 cm



Thick and natural silk is knotted into the woolen pile of the rug at random. The Oldie Soie still has a beautiful worn-down aesthetic which is rich and tactile to the touch, but with the addition of the silk it also has a slight and elegant shine.

in the catalogue since 2016  
details on page 115





in the catalogue since 2014 / details on page 120



# DIPPED ANGLE

DIPPED COLLECTION

GREEN-CIPRIA

Dynamic in design and in its use of materials. Subtle geometric shards of natural materials are juxtaposed with soft pastel-colors creating movement and balance. Simple in aesthetic but complex in touch, the dipped angle is a sophisticated blend of design and research.



170x240, 230x300 cm



# CASELLARIO MONOCROMO 2.0

## ARCHITECTURAL COLLECTION

The continuation of the design research that inspired the first rug designed by Parisotto + Formenton in 2014 was the foundation for the new Casellario Monocromo 2.0. The geometry of the rug, with highly contemporary lines, recalls the patterns of wooden or stone floors laid in a casellario or block form. The geometry of the design is disturbed by a few exceptions, some of the horizontal strips, each with a varying size, have oblique cuts breaking the pattern of the rug. The rug plays on the apparent contradiction of one color. The fields of color are juxtaposed with different materials (Himalayan wool and pure silk) which give varying depths and tones of the same color, it's read as a series of tone-on-tone nuances with contrasting levels of brilliance.

ANTRACITE



170x240, 230x300 cm

MOONLIGHT



170x240, 230x300 cm

designed by  
Parisotto + Formenton

in the catalogue since 2017 / details on page 126







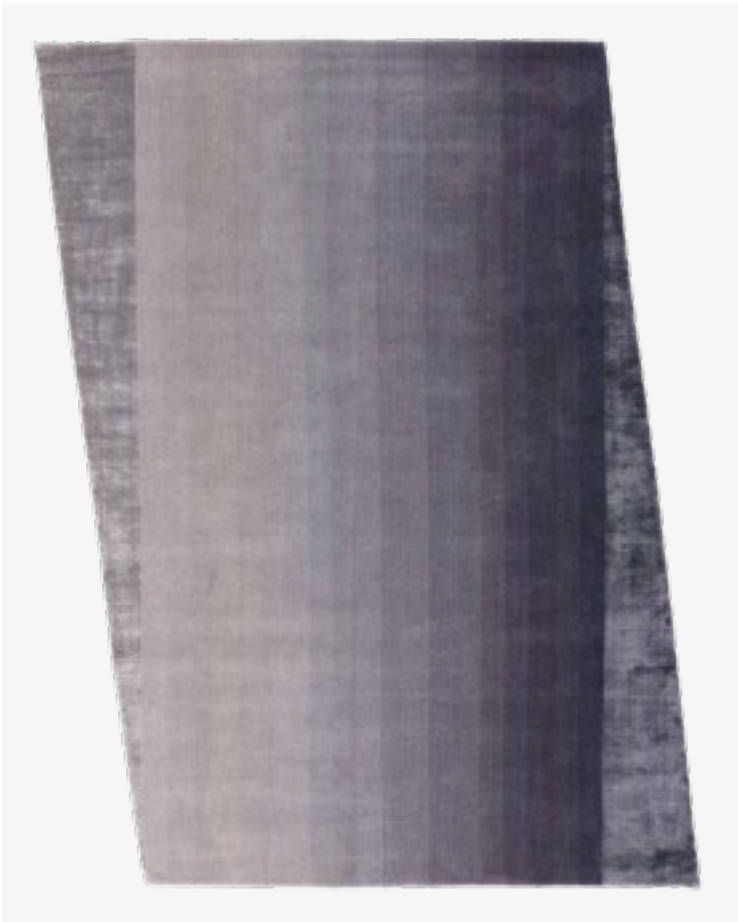
in the catalogue since 2019 / details on page 136

# DUSK

## METROQUADRO COLLECTION

More than a simple gradient, the contemporary shape is accentuated by the combination of materials, shards of silk contrast with the strong gradient of Himalayan wool, highlighting the dynamic and diagonal frame of the rug.

### ANTRACITE



170x240, 230x300 cm





FOREST



170x240, 230x300 cm

GOLD



170x240, 230x300 cm



GRAY



170x240, 230x300 cm

A design comprised of delicate lines which create a slow and undulating visual movement. Whether with subtle or bold colors, the design always maintains a soft and beautiful appearance, hence the name Haze.

# HAZE

METROQUADRO COLLECTION

ARCOBALENO

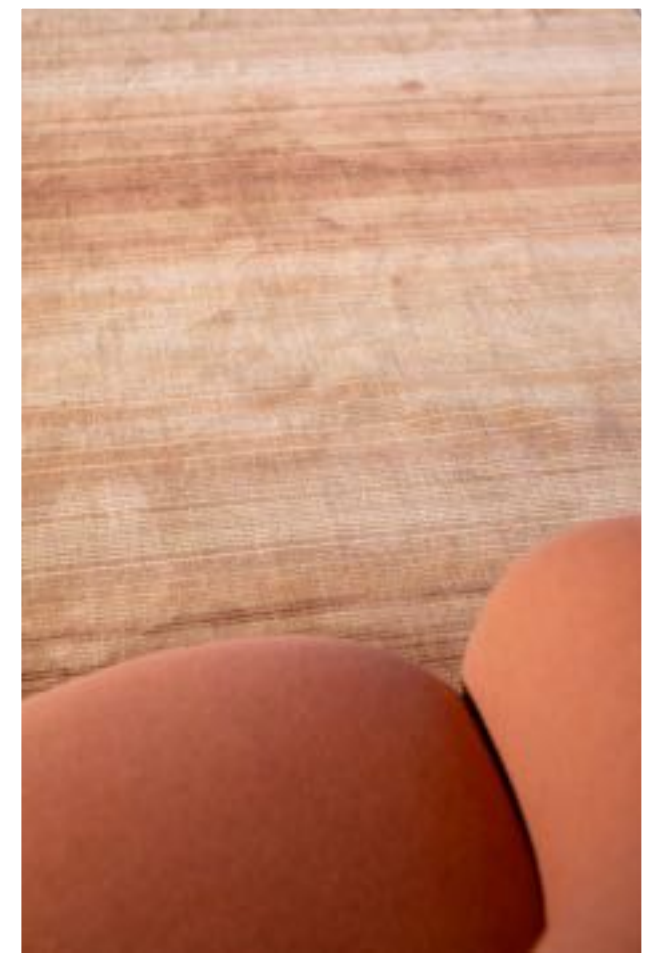


170x240, 230x300 cm

in the catalogue since 2019  
details on page 136



PINK



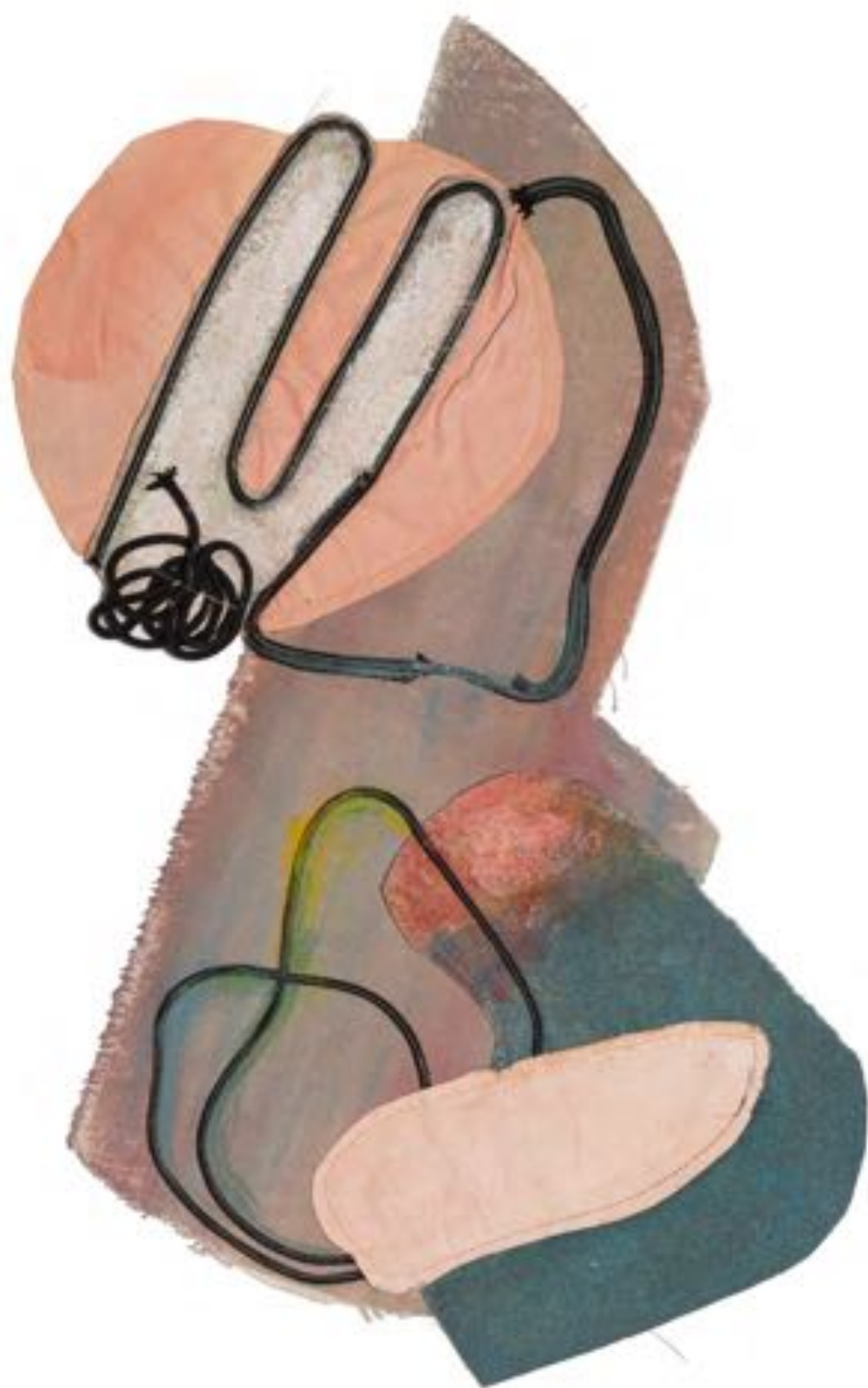


# FAYE TOOGOOD

faye toogood and cc-tapis created a bespoke collection of six handmade rugs entitled 'doodles'. their overarching aesthetic is painterly, abstract and freethinking as they respond to toogood's preoccupation through her work to 'tinker' and intuitively explore new styles without boundaries. the 'doodles' collection draws on these tinkering techniques through the employment of off-cuts and appliquéd cords to create collage styled assemblages. as such, the pieces feature graphic stitching detail that form curious patterns connecting the playful cut out shapes.

**cc-tapis®**





RECLINING FIGURE

artwork 1/6

Tempera painting on stitched fabric

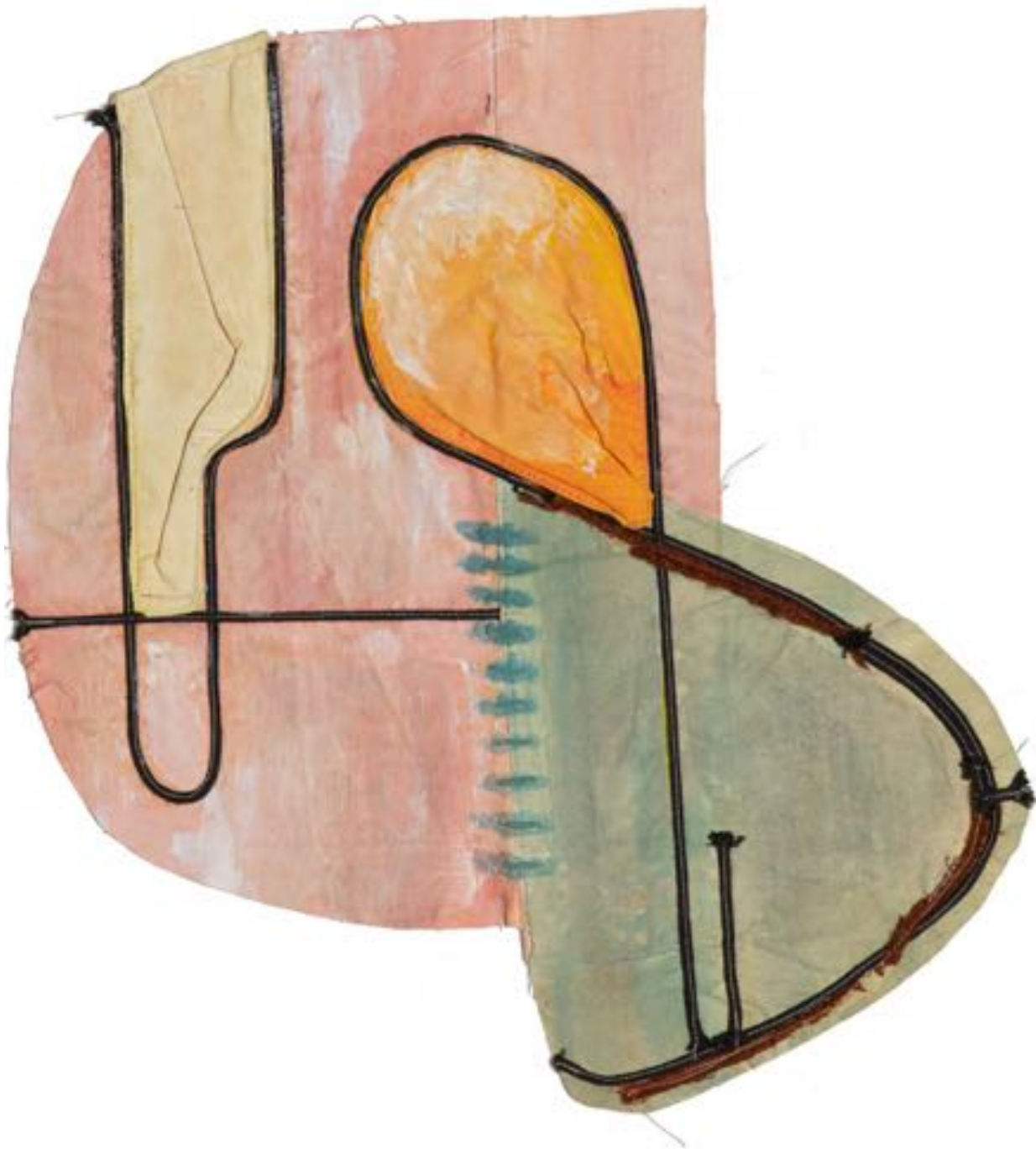


SEATED NUDE

artwork 2/6

Tempera painting on stitched fabric





ABSTRACT COMPOSITION  
artwork 3/6

Tempera painting on stitched fabric



WINTER STILL LIFE  
artwork 4/6

Tempera painting on stitched fabric





INTERIOR WITH TABLE

artwork 5/6

Tempera painting on stitched fabric



THE MANTLE PIECE

artwork 6/6

Tempera painting on stitched fabric





SUMMARY







# SUMMARY

H = HIGHLIGHTS  
S = SUMMARY



## WALLHANGING

S	
106	hello sonia! wallhanging
106	lanolin
106	talisman



## CONTEMPORARY

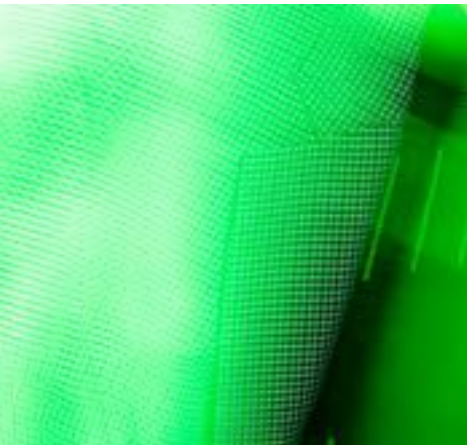
	H	S	
NEW	60	86	after party
	50	86	asmara
		86	chipo / zo
		87	doodles
NEW	56	88	bliss
NEW	48	90	envolée
NEW	4	90	feathers
		90	eyes in chains
NEW	20	92	fordite
		92	flatlandia
		93	giudecca
		94	inventory
		96	primitive weave
		96	rotazioni
NEW	16	96	slinkie
NEW	54	98	super fake
NEW	52	98	the night of a hunter
	41	100	the one / the other
		102	tribù
NEW	14	102	visioni
NEW	22	104	xequer

	H	S	
NEW	46	108	chand
		108	ecailles dégradé 2.0
		108	infini
		108	infini stucco soie
		110	mesh
		110	mini infini
		110	mini infini soie
		112	ncfc
		112	p.a.n.e / p.a.n.e soie
		112	maze / maze soie
		112	razor



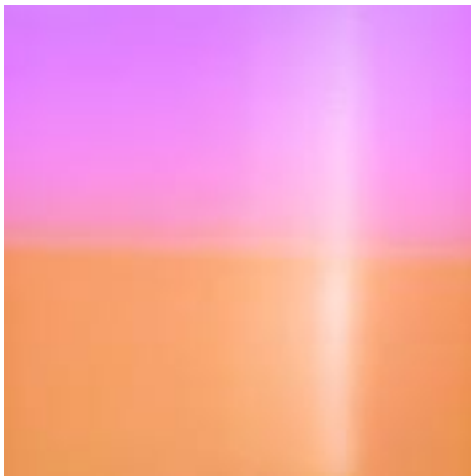
## OLDIE

	H	S	
68		114	oldie light
		114	oldie dark
		115	oldie spot
		115	oldie soie
		116	oldie full
		116	new japan
66		116	segni minimi



## TRACES DE MEMOIRE

	S	
	118	traces d'aubusson
	118	traces d'aubusson full
	118	traces de savonnerie
	118	traces de savonnerie full
	119	traces d'orient



## DIPPED

	H	S	
70		120	dipped frame
		120	dipped lotto
		120	dipped angle
		120	dipped ribbon



## NEW CLASSIC

	H	S	
NEW	8	122	cinquecento
		122	néoclassique
		122	forêt
		123	new forêt
		124	rug invaders



## ARCHITECTURAL

	H	S	
72		126	casellario monocromo
		126	casellario monocromo 2.0
		126	fasuma
		128	hole
NEW	42	128	cut out monocromo
			linen
	38	129	parvata
	26	130	lunar addiction
NEW	32	132	plasterworks
		132	tidal
		132	tye 'n dye bicolor
		132	tye 'n dye soie



## METROQUADRO

	H	S	
NEW	74	134	back to school
		134	cut out 2.0 linen
		134	check
		134	campo
NEW	78	136	dusk
		136	haze
		136	nino
		137	mind the gap
		137	scaccommatto
		137	orizzonti
		138	hello sonia!
NEW		138	tv room
		138	hello sonia! reloaded



AFTER PARTY

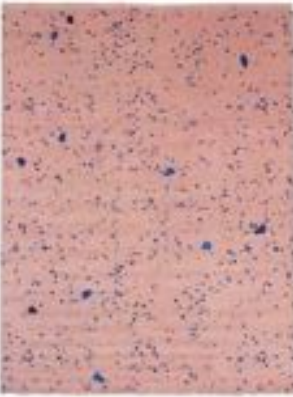
quality: A+ (152.000 knots/sqm approx.)  
standard dimension: 170x240, 230x300 cm  
custom sizes available

designed by Garth Roberts  
more images on page: 60



NATURAL WHITE

materials: cotton weave,  
himalayan wool  
and silk pile



PINK

materials: cotton weave,  
himalayan wool  
and silk pile



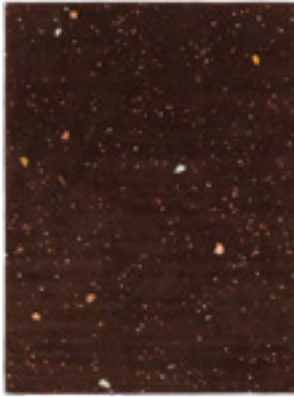
BLACK

materials: cotton weave,  
himalayan wool,  
silk and aloe pile



BLUE

materials: cotton weave,  
himalayan wool, silk pile  
and metallic fibre



BROWN

materials: cotton weave,  
himalayan wool, silk pile  
and metallic fibre

ASMARA

materials: cotton weave,  
himalayan wool pile  
quality: B (89.000 knots/sqm approx.)  
standard dimension: 180x300 cm  
custom sizes and colors available

designed by Federico Pepe  
more images on page: 50



STANDARD

CHIPO / ZO

materials: cotton weave,  
himalayan wool pile  
quality: A (125.000 knots/sqm approx.)  
standard dimension: 170x240, 230x300 cm  
custom sizes available

designed by Studio Zaven



CHIPO STANDARD



ZO STANDARD

DOODLES

materials: cotton weave,  
himalayan wool pile and cotton stitching  
quality: A (125.000 knots/sqm approx.)  
standard dimension: 170x240, 230x300 cm  
custom sizes available

designed by Faye Toogood



INTERIOR WITH TABLE  
STANDARD

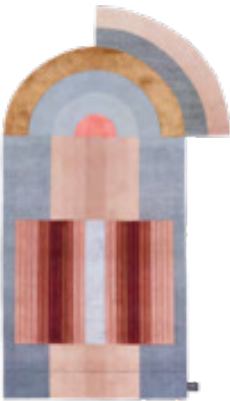




BLISS

materials: cotton weave,  
himalayan wool and silk pile  
quality: A+ (152,000 knots/sqm approx.)  
custom sizes available

designed by Mae Engelgeer  
more images on page: 56



BIG RED

standard dimension:  
170x300 cm



BIG YELLOW

standard dimension:  
170x300 cm



BIG BLUE

standard dimension:  
170x300 cm



BIG ULTIMATE

standard dimension:  
170x300 cm



ROUND RED

standard dimension:  
250x250 cm



ROUND BLUE

standard dimension:  
250x250 cm



ULTIMATE STANDARD

standard dimension:  
233x250 cm



BLISS BIG BLUE



ULTIMATE STANDARD



BLISS ROUND RED, BIG RED



# ENVOLÉE

materials: cotton weave,  
himalayan wool and linen pile  
quality: B (89.000 knots/sqm approx.)  
standard dimension: 170x240, 230x300 cm  
custom sizes available

designed by Cristina Celestino  
more images on page: 48



PINK



FOREST



AMBER

# FEATHERS

materials: cotton weave,  
himalayan wool and silk pile  
quality: A++ (232.000 knots/sqm approx.)  
custom sizes available  
only in bigger dimension

designed by Maarten De Ceulaer  
more images on page: 4



ROUND STANDARD

standard dimension:  
250x250 cm



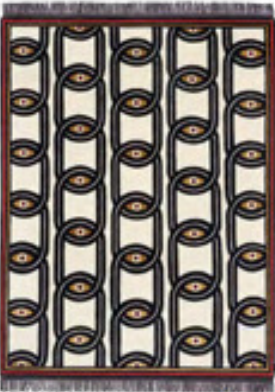
FREEFORM STANDARD

standard dimension:  
200x133 cm

# EYES IN CHAINS

materials: cotton weave,  
himalayan wool and silk pile  
quality: A+ (152.000 knots/sqm approx.)  
standard dimension: 170x240, 230x300 cm  
custom sizes available

designed by Federico Pepe



STANDARD

ENVOLÉE PINK



EYES IN CHAINS STANDARD



FORDITE

materials: cotton weave, himalayan wool,  
silk and aloe pile  
quality: A (125.000 knots/sqm approx.)  
custom sizes available

designed by Patricia Urquiola  
more images on page: 20



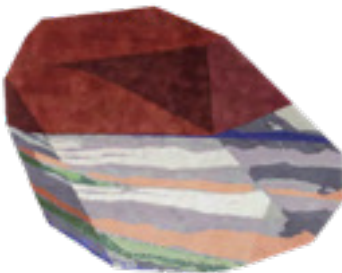
1 STANDARD

standard dimension:  
170x300 cm



2 STANDARD

standard dimension:  
200x300 cm



3 STANDARD

standard dimension:  
230x300 cm

FLATLANDIA

materials: cotton weave, himalayan wool pile  
standard dimension: 170x240, 230x300 cm  
custom sizes available

designed by Elena Salmistraro



CARTESIO  
STANDARD

quality: B (89.000 knots/  
sqm approx.)



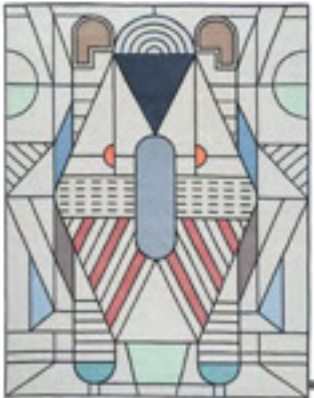
CARTESIO OUTLINE  
STANDARD

quality: A (125.000 knots/  
sqm approx.)



EULERO  
STANDARD

quality: B (89.000 knots/  
sqm approx.)



EULERO OUTLINE  
STANDARD

quality: A (125.000 knots/  
sqm approx.)

GIUDECCA

materials: cotton weave,  
himalayan wool and silk pile  
quality: A+ (152.000 knots/sqm approx.)  
standard dimension: 150x240 cm  
custom sizes available

designed by Zanellato/Bortotto



STANDARD





INVENTORY

quality: handloom  
standard dimensions: 170x240, 230x300 cm;  
PATCH 200x300 cm  
custom sizes available

designed by Faye Toogood



QUILT CHARCOAL

materials: cotton weave,  
himalayan wool pile  
and cotton stitching



TACK CREAM

materials: cotton weave,  
himalayan wool, linen pile  
and cotton stitching



ROPE CHARCOAL

materials: cotton weave,  
himalayan wool pile  
and cotton stitching



PATCH RAW

materials: cotton weave,  
linen pile



QUILT CHARCOAL, RAW



ROPE RAW



TACK CREAM



PATCH RAW



PRIMITIVE WEAVE

quality: B (89.000 knots/sqm approx.)  
standard dimension: 170x240, 230x300 cm  
custom sizes and colors available

designed by Chiara Andreatti



1 CIPRIA

materials: cotton weave,  
himalayan wool pile



1 STONE

materials: cotton weave,  
himalayan wool pile  
and metallic fibre



2 STANDARD

materials: cotton weave,  
himalayan wool pile



2 PURPLE

materials: cotton weave,  
himalayan wool pile



3 STANDARD

materials: cotton weave,  
himalayan wool pile



4 NAVY

materials: cotton weave,  
himalayan wool pile

ROTAZIONI

materials: cotton weave,  
himalayan wool pile  
quality: A (125.000 knots/sqm approx.)  
standard dimension: 220x300 cm  
custom sizes available

designed by Patricia Urquiola  
more images on page: 16



A STANDARD

standard dimensions:  
220x300 cm



A ELECTRIC PINK

standard dimensions:  
220x300 cm



A ELECTRIC BLUE

standard dimensions:  
220x300 cm



B STANDARD

standard dimensions:  
180x240 cm



B ELECTRIC PINK

standard dimensions:  
180x240 cm



B ELECTRIC BLUE

standard dimensions:  
180x240 cm

PRIMITIVE WEAVE 4 RUST



ROTAZIONI A STANDARD





SLINKIE

quality: A+ (152.000 knots/sqm approx.)  
custom sizes available

designed by Patricia Urquiola  
more images on page: 54



STANDARD

materials: cotton weave,  
himalayan wool  
and silk pile  
standard dimension:  
154x320 cm



DOUBLE STANDARD

materials: cotton weave,  
himalayan wool pile  
standard dimension:  
230x268 cm



TRIPLE STANDARD

materials: cotton weave,  
himalayan wool pile  
standard dimension:  
223x300 cm



TRIPLE PINK

materials: cotton weave,  
himalayan wool pile  
standard dimension:  
223x300 cm

SUPER FAKE

materials: cotton weave,  
himalayan wool, silk and linen pile  
quality: A (125.000 knots/sqm approx.)

designed by Bethan Laura Wood  
more images on page: 52



SUPER ROCK MOON

standard dimension:  
250x250 cm



SUPER ROCK HOT

standard dimension:  
250x250 cm



SUPER ROUND MOON

standard dimension:  
250x250 cm  
custom sizes available



SUPER ROUND HOT

standard dimension:  
250x250 cm  
custom sizes available

DOUBLE SLINKIE STANDARD



SUPER ROUND,  
SUPER ROCK MOON



SUPER RUNNER MOON

standard dimension:  
80x350 cm  
custom sizes available



SUPER STANDARD MOON

standard dimension:  
230x300 cm  
custom sizes available



THE NIGHT OF A HUNTER

materials: cotton weave,  
himalayan wool pile  
quality: A (125.000 knots/sqm approx.)  
standard dimension: 300x230cm  
custom sizes available

designed by Rooms Studio  
more images on page: 41



DEER AT NIGHT  
STANDARD



THE LIONS AT NIGHT  
STANDARD



TWO DEER  
STANDARD



TWO DEER STANDARD



THE LIONS AT NIGHT STANDARD



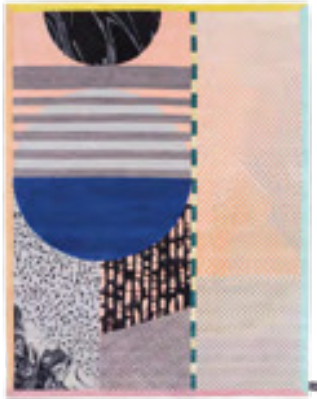
THE LIONS AT NIGHT, DEER AT NIGHT STANDARD



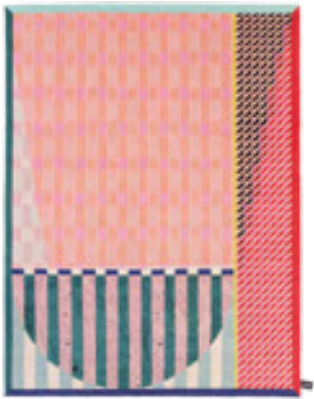
THE ONE / THE OTHER

materials: cotton weave,  
himalayan wool and silk pile  
quality: A+ (152.000 knots/sqm approx.)  
standard dimension: 230x300 cm  
custom sizes available

designed by Alex Proba



THE ONE STANDARD



THE OTHER STANDARD

TRIBÙ

materials: cotton weave,  
himalayan wool and silk pile  
quality: moroccan weave  
standard dimension: 170x240, 230x300 cm  
custom sizes and colors available

designed by Ludovica+Roberto Palomba



MATA STANDARD

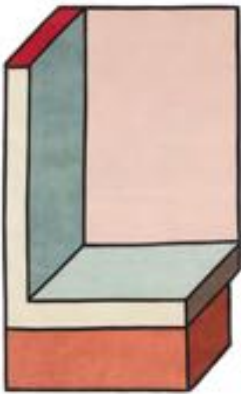


MATA UNDYED

VISIONI

materials: cotton weave,  
himalayan wool pile  
quality: A (125.000 knots/sqm approx.)  
custom sizes available

designed by Patricia Urquiola  
more images on page: 14



A STANDARD

standard dimension:  
190x300 cm



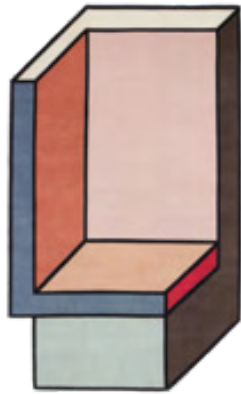
A FADED

standard dimension:  
190x300 cm



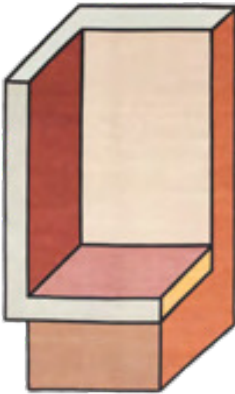
A ELECTRIC

standard dimension:  
190x300 cm



B STANDARD

standard dimension:  
180x300 cm



B FADED

standard dimension:  
180x300 cm



B ELECTRIC

standard dimension:  
180x300 cm



MATA STANDARD



VISIONI A,B STANDARD



XEQUER

materials: cotton weave,  
himalayan wool, silk and linen pile  
quality: A (125.000 knots/sqm approx.)  
standard dimension: 170x240, 230x300 cm

designed by Martino Gamper  
more images on page: 22



A STANDARD



B STANDARD



C STANDARD



D STANDARD



E STANDARD



XEQUER C STANDARD



XEQUER E STANDARD



XEQUER B, A, D, C STANDARD



HELLO SONIA! WALLHANGING

materials: cotton weave,  
himalayan wool pile and brass  
quality: oldie  
standard dimension: 140x160 cm

designed by Studiopepe.



BIG STANDARD



BIG PALLADIO

LANOLIN

materials: cotton weave,  
himalayan wool pile  
custom sizes available

designed by Daniele Lora



BLACK

standard dimension:  
60x160 cm



BURGUNDY

standard dimension:  
100x160 cm

TALISMAN

materials: cotton weave,  
himalayan wool pile, mirror,  
LED and steel  
quality: oldie  
standard dimension: 65x127 cm

designed by Studiopepe.



PINK



HELLO SONIA! WALLHANGING  
BIG STANDARD



TALISMAN PINK



CHAND

materials: cotton weave,  
himalayan wool pile  
quality: A (125.000 knots/sqm approx.)  
standard dimension: 170x240, 230x300 cm  
custom sizes and colors available

designed by the cc-tapis design-lab  
more images on page: 46



STANDARD

ECAILLES DEGRADÉ 2.0

materials: cotton weave,  
himalayan wool and silk pile  
quality: A (125.000 knots/sqm approx.)  
standard dimension: 170x240, 230x300 cm  
custom sizes and colors available



TEAL [CF]



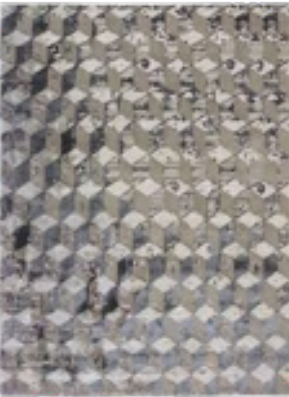
TERRACOTTA [EH]

INFINI

materials: cotton weave,  
himalayan wool pile  
quality: A (125.000 knots/sqm approx.)  
standard dimension: 170x240, 230x300 cm  
custom sizes and colors available



TUNDRA



SLEEK



PETROL



ICE

INFINI STUCCO SOIE

materials: cotton weave,  
himalayan wool and silk pile  
quality: A+ (152.000 knots/sqm approx.)  
standard dimension: 170x240, 230x300 cm  
custom sizes and colors available



INFINI STUCCO SOIE ICE



MESH

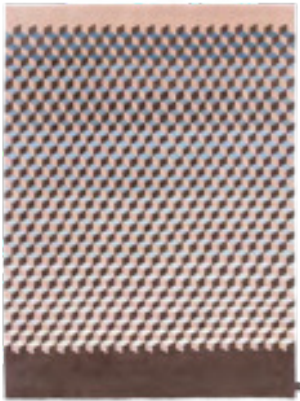
materials: cotton weave,  
himalayan wool and silk pile  
quality: A+ (152.000 knots/sqm approx.)  
standard dimension: 170x240, 230x300 cm  
custom sizes and colors available



SLEEK



ICE



CIPRIA

MINI INFINI

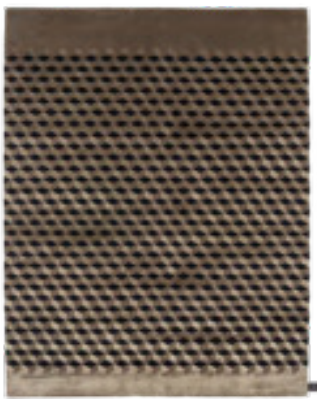
materials: cotton weave,  
himalayan wool pile  
quality: A (125.000 knots/sqm approx.)  
standard dimension: 170x240, 230x300 cm  
custom sizes and colors available



SLEEK



FULL TUNDRA



FULL BRONZE

MINI INFINI SOIE

materials: cotton weave,  
himalayan wool and silk pile  
quality: A (125.000 knots/sqm approx.)  
standard dimension: 170x240, 230x300 cm  
custom sizes and colors available

MINI INFINI CIPRIA



MINI INFINI SOIE SLEEK



MINI INFINI FULL TUNDRA





NCFC

materials: cotton weave,  
himalayan wool pile  
quality: A (125.000 knots/sqm approx.)  
standard dimension: 170x240, 230x300 cm  
custom sizes and colors available



STANDARD

P.A.N.E. / P.A.N.E. SOIE

quality: A (125.000 knots/sqm approx.)  
standard dimension: 170x240, 230x300 cm  
custom sizes and colors available



P.A.N.E. STANDARD

materials: cotton weave,  
himalayan wool pile



P.A.N.E. SOIE BRONZE

materials: cotton weave,  
himalayan wool  
and silk pile

MAZE / MAZE SOIE

quality: A (125.000 knots/sqm approx.)  
standard dimension: 170x240, 230x300 cm  
custom sizes and colors available



MAZE STANDARD

materials: cotton weave,  
himalayan wool pile



MAZE SOIE BRONZE

materials: cotton weave,  
himalayan wool  
and silk pile

RAZOR

materials: cotton weave,  
himalayan wool and bamboo silk pile  
quality: A (125.000 knots/sqm approx.)  
standard dimension: 170x240, 230x300 cm  
custom sizes and colors available



STANDARD

P.A.N.E. STANDARD



P.A.N.E. SOIE BRONZE



RAZOR STANDARD





OLDIE LIGHT

materials: cotton weave,  
light and dark undyed himalayan wool pile  
quality: oldie  
standard dimension: 170x240, 230x300 cm  
custom sizes and colors available



BLACK [BT-01]



TEAL [CE-01]



BORDEAUX [EG-04]



YELLOW [DJ-02]

OLDIE DARK

materials: cotton weave,  
dark and light undyed himalayan wool pile  
quality: oldie  
standard dimension: 170x240, 230x300 cm  
custom sizes and colors available



CIPRIA [EJ-09]



TEAL [CE-01]



MINT [CH-09]



YELLOW [DJ-02]

OLDIE SPOT

materials: cotton weave,  
himalayan wool pile  
quality: oldie  
standard dimension: 170x240, 230x300 cm  
custom sizes and colors available



BLACK [BT-01]

OLDIE SOIE

materials: cotton weave,  
himalayan wool and silk pile  
quality: oldie  
standard dimension: 170x240, 230x300 cm  
custom sizes and colors available

more images on page: 68



NATURAL WHITE



ICE [D-005]





OLDIE FULL

materials: cotton weave,  
himalayan wool pile  
quality: oldie  
standard dimension: 170x240, 230x300 cm  
custom sizes and colors available



BLACK [BT-01]



PIOMBO RUST [EJ-03]



STANDARD

NEW JAPAN

materials: cotton weave,  
himalayan wool pile  
quality: oldie  
standard dimension: 170x240, 230x300 cm  
custom sizes and colors available

designed by Chiara Andreatti

SEGNI MINIMI

materials: cotton weave,  
himalayan wool pile  
quality: oldie  
standard dimension: 170x240, 230x300 cm  
custom sizes and colors available

designed by Giuseppe Di Costanzo  
more images on page: 66



CIPRIA [EJ-09]



YELLOW [DJ-02]



PETROL [CF-02]



NEW JAPAN STANDARD



SEGNI MINIMI YELLOW



SEGNI MINIMI CIPRIA, YELLOW



## TRACES D'AUBUSSON

materials: cotton weave,  
himalayan wool and silk pile  
quality: A+ (152.000 knots/sqm approx.)  
standard dimension: 170x240, 230x300 cm  
custom sizes and colors available



LIGHT PETROL [CG-02]  
NAT FRINGES



DARK NAVY [BC-02]  
BC-02 FRINGES

## TRACES D'AUBUSSON FULL

materials: cotton weave,  
himalayan wool and silk pile  
quality: A+ (152.000 knots/sqm approx.)  
standard dimension: 170x240, 230x300 cm  
custom sizes and colors available



ICE  
[BG-04 BACKGROUND,  
D-005 DESIGN]



BLACK&WHITE  
[BT-01 BACKGROUND,  
WHITE DESIGN]

## TRACES DE SAVONNERIE

materials: cotton weave,  
himalayan wool and silk pile  
quality: A+ (152.000 knots/sqm approx.)  
standard dimension: 170x240, 230x300 cm  
custom sizes and colors available



LIGHT CARAMEL [AH-02]  
AH-02 FRINGES



DARK SLEEK [AE-07]  
A-015 FRINGES



WHITE&BLACK  
[WHITE BACKGROUND,  
BT-01 DESIGN]



RUST  
[EH-03 BACKGROUND,  
A-060 DESIGN]



## TRACES D'ORIENT

materials: cotton weave,  
himalayan wool and silk pile  
quality: A+ (152.000 knots/sqm approx.)  
standard dimension: 170x240, 230x300 cm  
custom sizes and colors available



STANDARD



BLUE GOLD





DIPPED FRAME

materials: cotton weave,  
himalayan wool, silk and aloe pile  
quality: A (125.000 knots/sqm approx.)  
standard dimension: 170x240, 230x300 cm  
custom sizes and colors available



STANDARD



FULL PETROL

DIPPED LOTTO

materials: cotton weave,  
himalayan wool, silk and aloe pile  
quality: A (125.000 knots/sqm approx.)  
standard dimension: 170x240, 230x300 cm  
custom sizes and colors available



COPPER [A-028]



BLACK [BT-01]

DIPPED ANGLE

materials: cotton weave,  
himalayan wool, silk and aloe pile  
quality: A (125.000 knots/sqm approx.)  
standard dimension: 170x240, 230x300 cm  
custom sizes and colors available



BLACK-CIPRIA



GREEN-CIPRIA



STANDARD



BLUE

DIPPED RIBBON

materials: cotton weave,  
himalayan wool, silk and aloe pile  
quality: A (125.000 knots/sqm approx.)  
standard dimension: 170x240, 230x300 cm  
custom sizes and colors available



STANDARD



BLUE

more images on page: 70



DIPPED FRAME FULL BRONZE



DIPPED RIBBON STANDARD



CINQUECENTO

materials: cotton weave,  
himalayan wool and silk pile  
quality: A (125.000 knots/sqm approx.)  
standard dimension: 170x240, 230x300 cm  
custom sizes available

designed by Studio Klass



ENEZIANO STANDARD



NASTAGIO STANDARD



MAZZOLINO STANDARD



ROVERELLA STANDARD

NÉOCLASSIQUE

materials: cotton weave,  
himalayan wool and silk pile  
quality: A (125.000 knots/sqm approx.)  
standard dimension: 170x240, 230x300 cm  
custom sizes and colors available



SLEEK



STANDARD [AD-10  
BACKGROUND BT-01 DESIGN]

FORÊT

materials: cotton weave,  
himalayan wool and silk pile  
quality: A+ (152.000 knots/sqm approx.)  
standard dimension: 170x240, 230x300 cm  
custom sizes and colors available

NEW FORÊT

materials: cotton weave,  
himalayan wool and silk pile  
quality: A+ (152.000 knots/sqm approx.)  
standard dimension: 170x240, 230x300 cm  
custom sizes and colors available



STANDARD [A-060  
BACKGROUND, A-011 DESIGN]



NASTAGIO STANDARD



NEW FORÊT STANDARD



RUG INVADERS

quality: A+ (152.000 knots/sqm approx.)  
custom sizes available

designed by the cc-tapis design-lab  
more images on page: 8



USHAK INVADER  
STANDARD

materials: cotton weave,  
himalayan wool  
and silk pile  
standard dimension:  
145x145 cm



KAZAK SPACE SHIFTER  
STANDARD

materials: cotton weave,  
himalayan wool pile  
and silk pile  
standard dimension:  
155x145 cm



PALMETTE LAZER CANNON  
LILLA

materials: cotton weave,  
himalayan wool  
and silk pile  
standard dimension:  
135x115 cm



PALMETTE LAZER CANNON  
PINK

materials: cotton weave,  
himalayan wool pile  
standard dimension:  
135x115 cm



TABRIZ DESTROYER CHECK

materials: cotton weave,  
himalayan wool  
and silk pile  
standard dimension:  
220x230 cm



TABRIZ DESTROYER  
STANDARD

materials: cotton weave,  
himalayan wool  
and silk pile  
standard dimension:  
220x230 cm



THE MOTHERSHIP  
TEAL

materials: cotton weave,  
himalayan wool  
and bamboo silk  
standard dimension:  
170x240, 230x300 cm



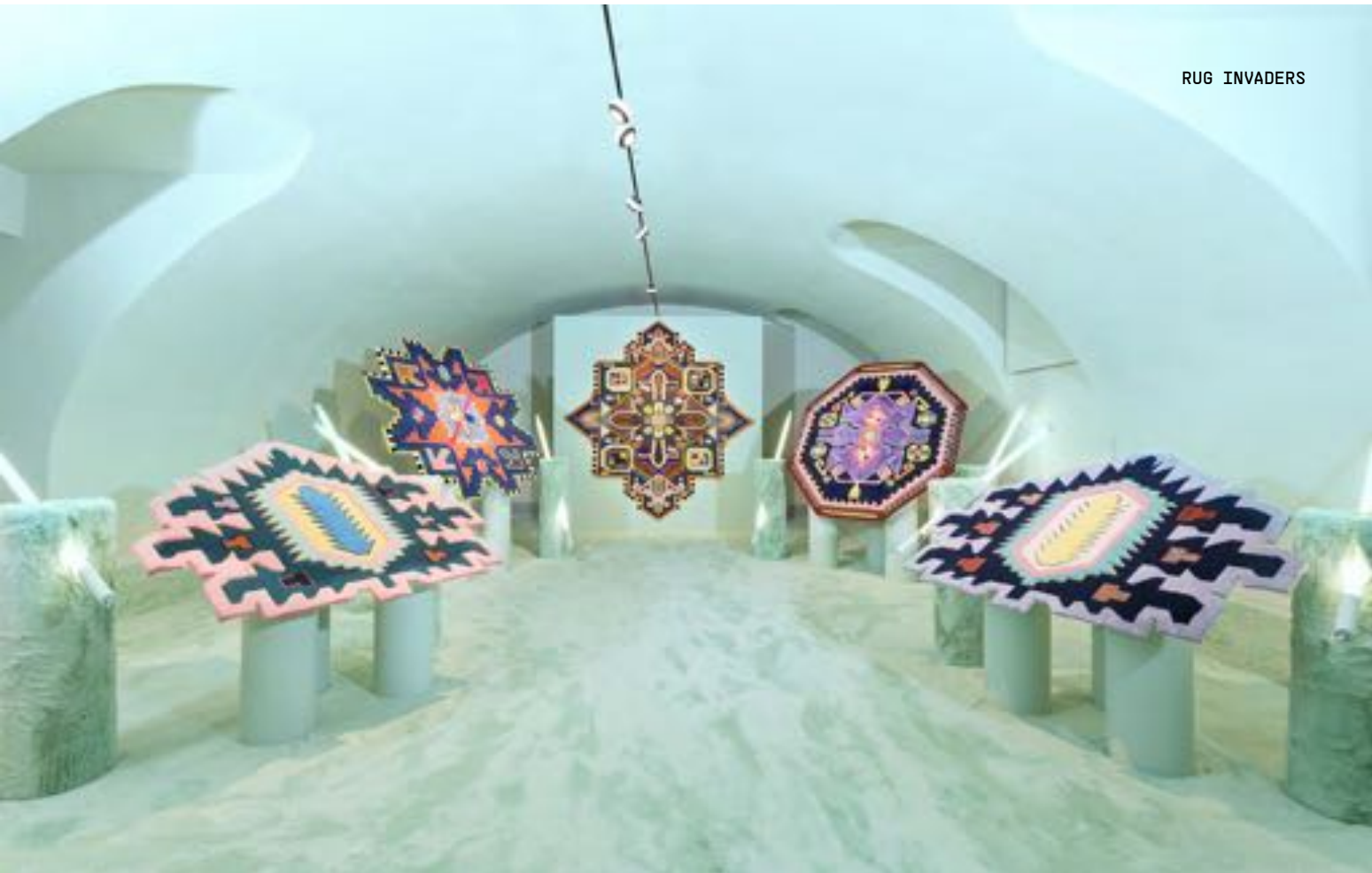
THE MOTHERSHIP  
PINK

materials: cotton weave,  
himalayan wool  
and bamboo silk  
standard dimension:  
170x240, 230x300 cm



THE MOTHERSHIP  
LILLA

materials: cotton weave,  
himalayan wool  
and bamboo silk  
standard dimension:  
170x240, 230x300 cm



USHAK INVADER STANDARD



CASELLARIO MONOCROMO

quality: A+ (152.000 knots/sqm approx.)  
standard dimension: 170x240, 230x300 cm  
custom sizes and colors available

designed by Parisotto + Formenton



WHITE UNDYED

materials: cotton weave,  
himalayan wool, silk  
and linen pile



GOLD [C-006]

materials: cotton weave,  
himalayan wool  
and silk pile



COCO [A-011]

materials: cotton weave,  
himalayan wool  
and silk pile



ANTRACITE [BS-03]

materials: cotton weave,  
himalayan wool  
and silk pile



BLACK [BT-01]

materials: cotton weave,  
himalayan wool  
and silk pile



TEAL [CE-01]

materials: cotton weave,  
himalayan wool  
and silk pile



CASELLARIO MONOCROMO 2.0

materials: cotton weave,  
himalayan wool and silk pile  
quality: A+ (152.000 knots/sqm approx.)  
standard dimension: 170x240, 230x300 cm  
custom sizes and colors available

designed by Parisotto + Formenton  
more images on page: 72



ANTRACITE [BS-03]



MOONLIGHT [BC-12]



A STANDARD



B STANDARD

FASUMA

materials: cotton weave,  
himalayan wool pile  
quality: C (60.000 knots/sqm approx.)  
standard dimension: 200x300 cm  
custom sizes available

designed by Chiara Andreatti





## HOLE

materials: cotton weave,  
himalayan wool and linen pile  
quality: B (89.000 knots/sqm approx.)  
standard dimension: 170x240, 230x300 cm  
custom sizes and colors available

designed by Parisotto + Formenton



STANDARD [BK-03]

## CUT OUT MONOCROMO LINEN

materials: cotton weave,  
himalayan wool and linen pile  
quality: B (89.000 knots/sqm approx.)  
standard dimension: 170x240, 230x300 cm  
custom sizes and colors available

designed by Parisotto + Formenton

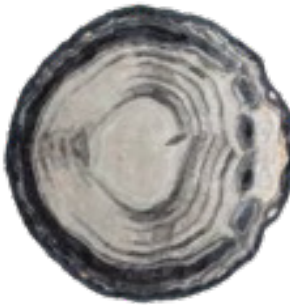


NATURAL WHITE

## PARVATA

materials: cotton weave,  
himalayan wool, bamboo silk and linen pile  
quality: A (125.000 knots/sqm approx.)  
custom sizes available

designed by Jean-Marie Massaud  
more images on page: 42



ROUND

standard dimension:  
250x250 cm



STANDARD

standard dimension:  
230x300 cm



PARVATA ROUND



CUT OUT MONOCROMO LINEN  
NATURAL WHITE

## LUNAR ADDICTION

materials: cotton weave,  
himalayan wool and linen pile  
quality: B (89.000 knots/sqm approx.)  
custom sizes and colors available

designed by Studiopepe.  
more images on page: 38



SQUARE STANDARD

standard dimension:  
250x250 cm



RECTANGLE STANDARD

standard dimension:  
230x300 cm



LUNAR ADDICTION SQUARE  
STANDARD

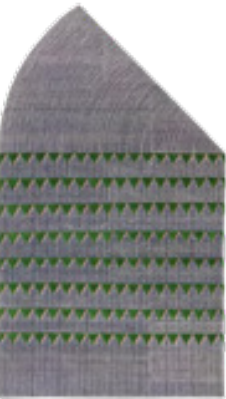
photo by Giuseppe Dinella



PLASTERWORKS

quality: A+ (152.000 knots/sqm approx.)  
custom sizes and colors available

designed by David/Nicolas  
more images on page: 26



A STANDARD

materials: cotton weave,  
himalayan wool pile  
standard dimension:  
170x300 cm



A BLACK&WHITE

materials: cotton weave,  
himalayan wool pile  
standard dimension:  
170x300 cm



A TOBACCO

materials: cotton weave,  
himalayan wool pile  
standard dimension:  
170x300 cm



B STANDARD

materials: cotton weave,  
himalayan wool pile  
standard dimension:  
170x180 cm



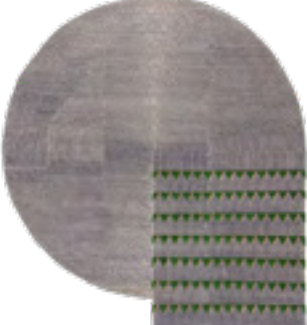
B BLACK&WHITE

materials: cotton weave,  
himalayan wool pile  
standard dimension:  
170x180 cm



B SAGE

materials: cotton weave,  
himalayan wool  
and silk pile  
standard dimension:  
170x180 cm



C STANDARD

materials: cotton weave,  
himalayan wool pile  
standard dimension:  
250x270 cm

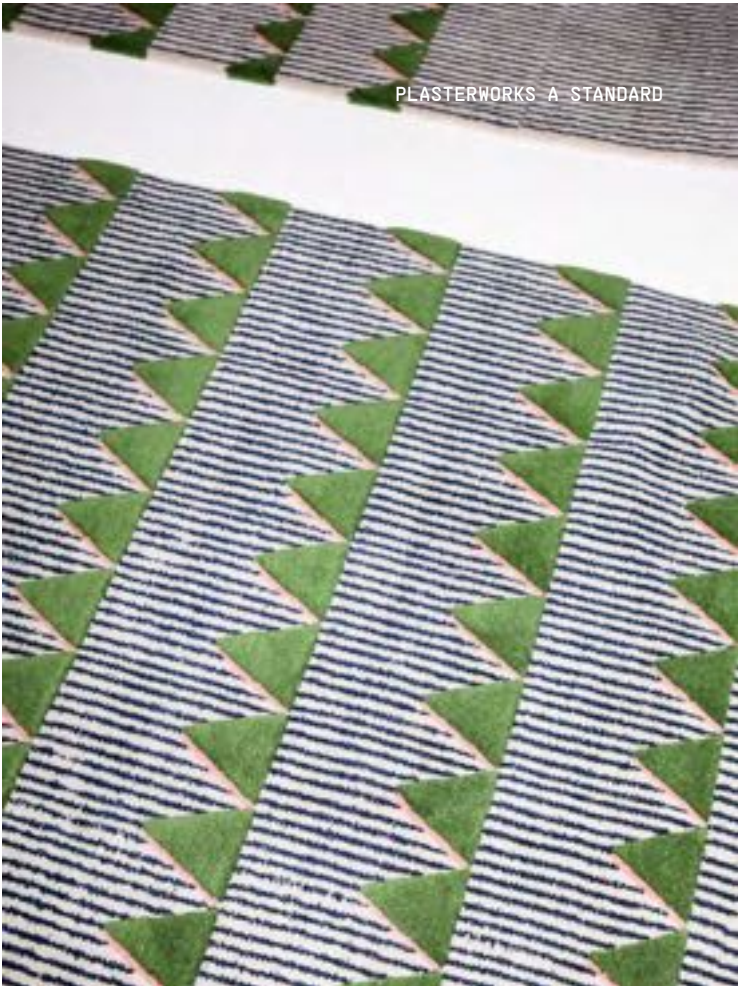


C BLACK&WHITE

materials: cotton weave,  
himalayan wool pile  
standard dimension:  
250x270 cm



PLASTERWORKS A BLACK&WHITE



PLASTERWORKS A STANDARD



TIDAL

materials: cotton weave,  
himalayan wool pile  
quality: A (125.000 knots/sqm approx.)  
custom sizes and colors available

designed by Germans Ermičs  
more images on page: 32



ISLE STANDARD

standard dimension:  
250x250 cm



RETREAT STANDARD

standard dimension:  
230x230 cm



OVERFLOW STANDARD

standard dimension:  
230x300 cm



CHROMA RADIATE STANDARD

standard dimension:  
250x250 cm



CHROMA SPILL STANDARD

standard dimension:  
230x300 cm



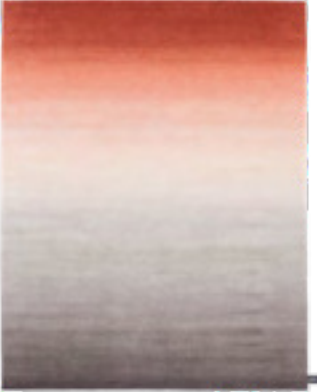
OVERFLOW STANDARD

TYE 'N DYE BICOLOR

materials: cotton weave,  
himalayan wool pile  
quality: A (125.000 knots/sqm approx.)  
standard dimension: 170x240, 230x300 cm  
custom sizes and colors available



BLUE-BEIGE [BG, AC]



RUST-IRON [EH, AJ]



NAVY [BC]

TYE 'N DYE SOIE

materials: cotton weave, silk pile  
quality: A (125.000 knots/sqm approx.)  
standard dimension: 170x240, 230x300 cm  
custom sizes and colors available



ISLE, RETREAT, OVERFLOW STANDARD



BACK TO SCHOOL

materials: cotton weave,  
himalayan wool pile  
quality: handloom  
standard dimension: 170x240, 230x300 cm  
custom sizes and colors available



WHITE



BLACK

CUT OUT 2.0 LINEN

materials: cotton weave,  
linen pile  
quality: handloom  
standard dimension: 170x240, 230x300 cm  
custom sizes and colors available

designed by Parisotto + Formenton



NATURAL WHITE

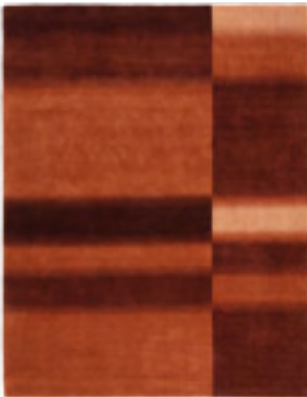
CHECK

materials: cotton weave,  
himalayan wool pile  
quality: handloom  
standard dimension: 170x240, 230x300 cm  
custom sizes and colors available

designed by Ludovica+Roberto Palomba



STANDARD



RUST

CAMPO

materials: cotton weave,  
linen and bamboo silk pile  
quality: handloom  
standard dimension: 170x240, 230x300 cm  
custom sizes and colors available

designed by Leonardo Talarico



STANDARD



BLUE

BACK TO SCHOOL WHITE



CAMPO FLAMINGO





DUSK

materials: cotton weave,  
himalayan wool and bamboo silk pile  
quality: handloom  
standard dimension: 170x240, 230x300 cm  
custom sizes and colors available

more images on page: 74



ANTRACITE [BS]



FOREST [CR]



GOLD [DD]

HAZE

materials: cotton weave,  
himalayan wool and bamboo silk pile  
quality: handloom  
standard dimension: 170x240, 230x300 cm  
custom sizes and colors available

more images on page: 78



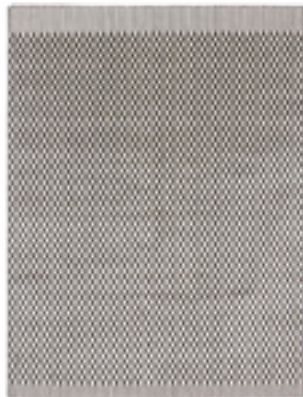
PINK



ARCOBALENO



GOLD



ICE

NINO

materials: cotton weave,  
himalayan wool and bamboo silk pile  
quality: handloom  
standard dimension: 170x240, 230x300 cm  
custom sizes and colors available

MIND THE GAP

materials: cotton weave,  
himalayan wool and bamboo silk pile  
quality: handloom  
standard dimension: 170x240, 230x300 cm  
custom sizes and colors available



STANDARD

SCACCOMATTO

materials: cotton weave,  
bamboo silk pile  
quality: handloom  
standard dimension: 170x240, 230x300 cm  
custom sizes and colors available

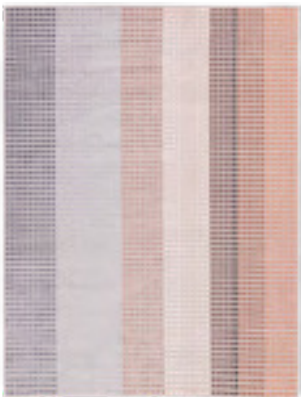


ICE [D-064]

ORIZZONTI

materials: cotton weave,  
himalayan wool and bamboo silk pile  
quality: handloom  
standard dimension: 170x240, 230x300 cm  
custom sizes available

designed by: Eligo Studio



DESERTO DI SALE STANDARD



DUNE STANDARD





HELLO SONIA!

materials: cotton weave,  
himalayan wool and bamboo silk pile  
quality: handloom  
standard dimension: 170x240, 230x300 cm  
custom sizes and colors available

designed by Studiopepe.



RUST [EJ-03]



FOREST [CS-03]



SLEEK [AE-07]



GINGER [DG-06]

TV ROOM

materials: cotton weave,  
himalayan wool and bamboo silk pile  
quality: handloom  
standard dimension: 170x240, 230x300 cm  
custom sizes and colors available



STANDARD



GINGER [DG-06]



BLACK [BT-01]

HELLO SONIA! RELOADED

materials: cotton weave,  
himalayan wool and bamboo silk pile  
quality: handloom  
standard dimension: 170x240, 230x300 cm  
custom sizes and colors available

designed by Studiopepe.



FLAMINGO [C-131]



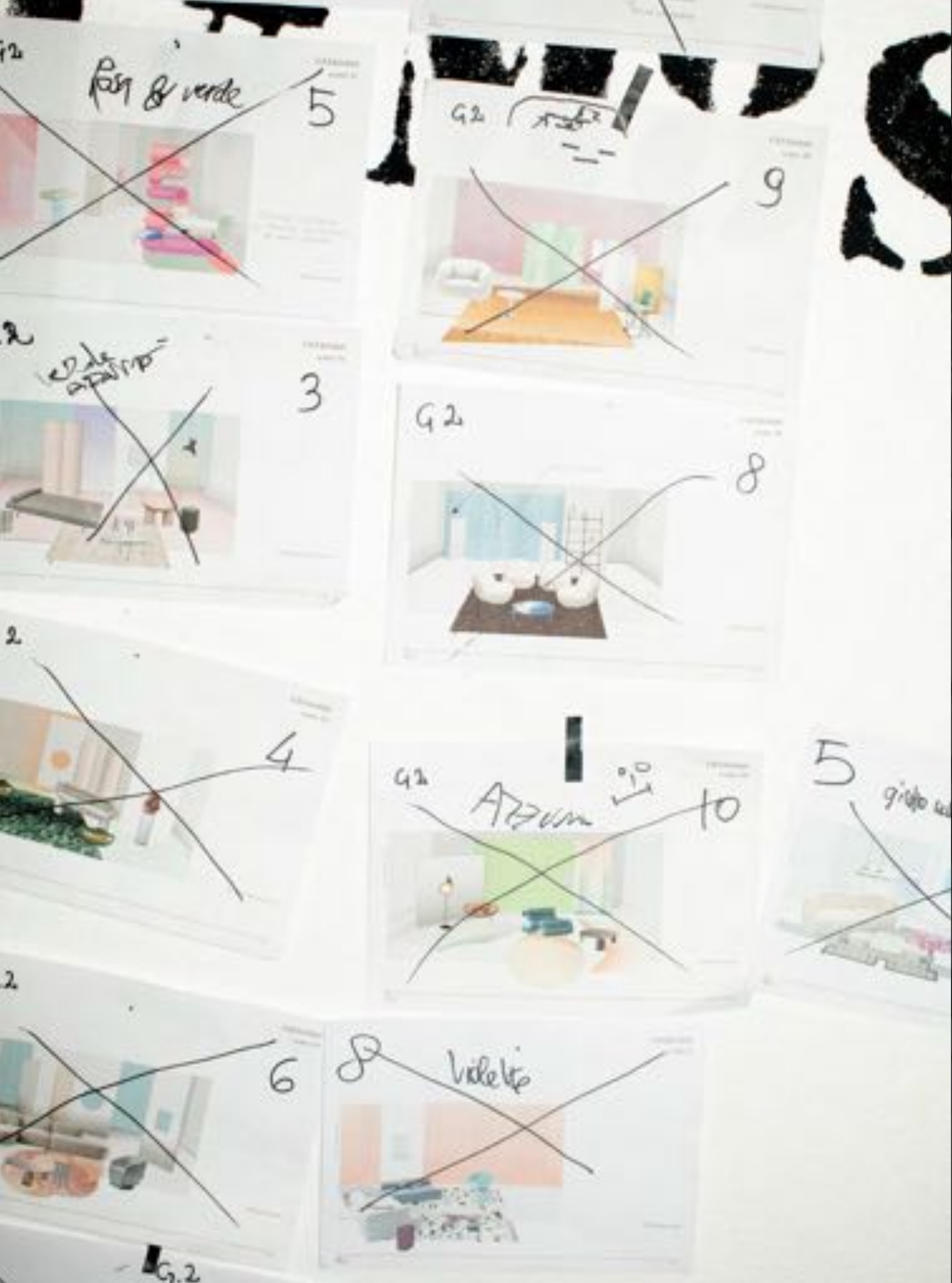
GRAY [BM-03]





# BEYOND CC-TAPIS

all cc-tapis  
handknotted rugs  
are completely  
created in nepal.  
far from mass  
production, the brand  
aims to offer  
a tailored service  
to those who  
understand and enjoy  
a high-end product,  
where a 3 month  
production time  
contains a story  
of ageless culture.

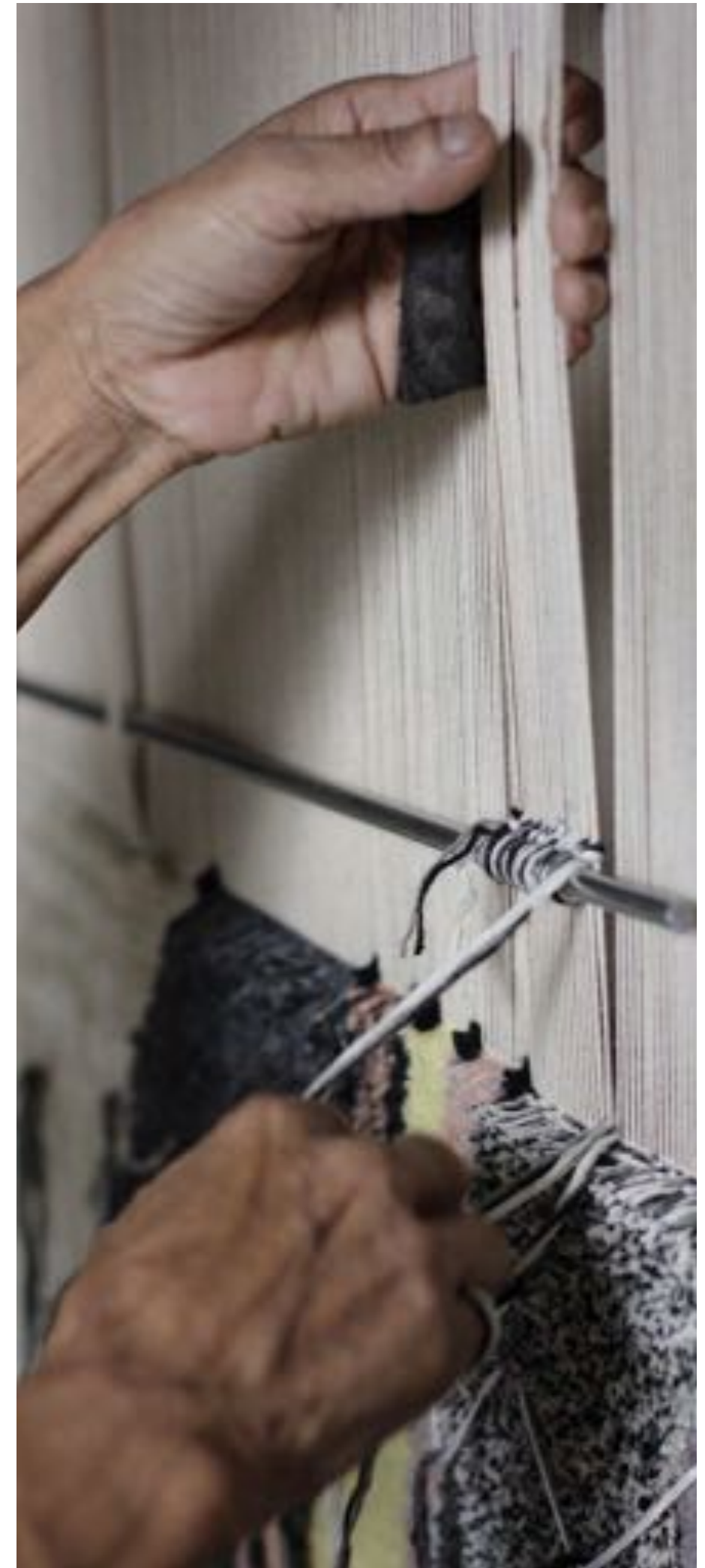






# PRODUCTION

What is a handknotted rug? It is a rug where every individual knot is made by hand, which is quite a task if you can imagine that a cc-tapis rug can have up to 232.000 Tibetan knots per square meter. No machines are ever used in the entire process and all rugs are produced the way they were produced a century ago. A strong respect for the materials and for the culture of this ancient craft is reflected in the company's eco-friendly approach to every step of production, ranging from the hand-spinning of the softest Himalayan wool to the use of purified rainwater for the washing of the final products, making each one of cc-tapis rugs unique.







# MATERIALS

## Himalayan wool

Himalayan wool comes from Tibetan Highland sheep, a robust and durable wool which is rich in natural lanolin. Lanolin gives the wool its strength and protects the sheep from the harsh weather in the Himalayas making the rugs naturally stain resistant. When dyed Himalayan wool maintains an incredible depth to the color never becoming flat.

## Pure silk

cc-tapis uses pure silk, made by the silk worm, which is imported directly from China. An extremely fine material with a beautiful and natural shine.



## Bamboo silk

A fibre created from bamboo cellulose. It is a natural and sustainable material with a thick and smooth texture. It has a beautiful shine very similar to pure silk. We recommend it for projects where clients would like full silky rugs with a thick, lustrous and high-pile.

## Linen

Linen is a natural material made from fibers of the flax plant. It is a rich and thick material which has a beautiful and subtle shine.

## Aloe

Aloe is a local nepali word for a type of nettle plant which grows abundantly in Nepal. A material that once it has been hand-carded and hand-spun is strong and extremely durable. It has a harder texture than wool and due to this hardness we recommend it for contract applications or high-traffic areas such as shops or hotels. It sheds much less than wool and can be fully dyed with the exception of light cold colors.





# WHAT IS CUSTOMIZABLE?

as cc-tapis produces its rugs exclusively by hand, this means that it's able to customize every rug. the brand can adapt the dimensions, give new colors, or work with you on a completely new design.

at the heart of this process is the cc-tapis design-lab assisting clients, architects and interior designers. there are endless possibilities to create a unique carpet using more than 1200 different colors and materials like wool, silk, linen or aloe, which can be combined to create different textures and varying pile heights.

between 8 and 24 weeks may be needed to produce a handknotted rug, depending on the size, the knot-count and the complexity of the design. upon request cc-tapis may also produce a sample of the desired rug.



# DESIGN LAB





PRIVATE RESIDENCE BRAZIL  
PROJECT BY CAROLINA PALLADINO ARCHITECTURE  
PHOTO BY RAPHAEL BRIEST STUDIO  
FLOWERS BY PRAID PICARELLI



PROJECT BY CAPRINI&PELLERIN  
ARCHITECTES  
PHOTO BY CAFEINE



INTERIOR DESIGN, P+F BOX  
PHOTO BY ALBERTO STRADA



PRIVATE RESIDENCE INDIA  
PROJECT BY TANYA SINGH  
PHOTO BY ISHA SHAH



PROJECT BY CAPRINI&PELLERIN ARCHITECTES  
PHOTO BY CAFEINE



PRIVATE RESIDENCE BRAZIL  
PROJECT BY CAROLINA PALLADINO ARCHITECTURE  
PHOTO BY RAPHAEL BRIEST STUDIO  
FLOWERS BY PRAID PICARELLI



BMW WELT  
PROJECT BY PATRICIA URQUIOLA



PRIVATE RESIDENCE INDIA  
PROJECT BY TANYA SINGH  
PHOTO BY ISHA SHAH



PRIVATE RESIDENCE BRAZIL  
PROJECT BY CAROLINA PALLADINO ARCHITECTURE  
PHOTO BY RAPHAEL BRIEST STUDIO  
FLOWERS BY PRAID PICARELLI



PRIVATE RESIDENCE INDIA  
PROJECT BY CLAUDE CARTIER DÉCORATION  
PHOTO BY GUILLAUME GRASSET



PRIVATE RESIDENCE INDIA  
PROJECT BY TANYA SINGH  
PHOTO BY ISHA SHAH



# CONTRACT POSSIBILITIES

born from the extensive experience of cc-tapis, cc-tapis project was born. a 360 advisory service providing bespoke flooring solutions for the contract market.

developed to fulfill the needs of the contract universe with a dynamic production capacity of hand-knotted and hand-tufted rugs being produced in nepal, india and thailand.

cc-tapis project can respond to any kind of demand and budget taking advantage of the know-how and quality of cc-tapis.



# CC-TAPIS PROJECT



# COLLABORATIONS



DESALTO SHOWROOM MILANO



ZANOTTA  
PHOTO BY BEPPE BRANCATO



DRIADE  
PHOTO BY IACOPO BARATTIERI



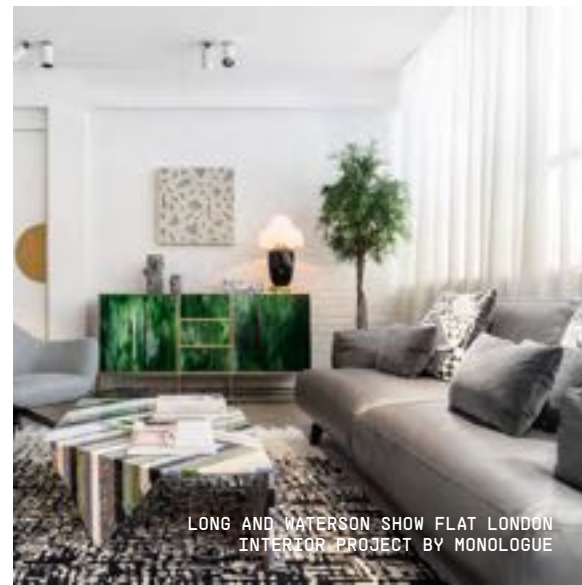
DRIADE  
PHOTO BY IACOPO BARATTIERI



MATTER OF STUFF LONDON  
PHOTO BY JOHN STURROCK



MINIFORMS  
PHOTO BY ADIBO.IT



LONG AND WATERSON SHOW FLAT LONDON  
INTERIOR PROJECT BY MONOLOGUE



LES ARCANISTES  
PROJECT BY STUDIOPEPE.  
PHOTO BY GIUSEPPE DINNELLA



ZANOTTA  
PHOTO BY BEPPE BRANCATO



MINIFORMS  
PHOTO BY ADIBO.IT



HORM  
PHOTO BY BY GIANNI ANTONIALI



SABA  
PHOTO BY BEPPE BRANCATO  
STYLING STUDIO MILO





SITIA  
PHOTO BY MM COMPANY



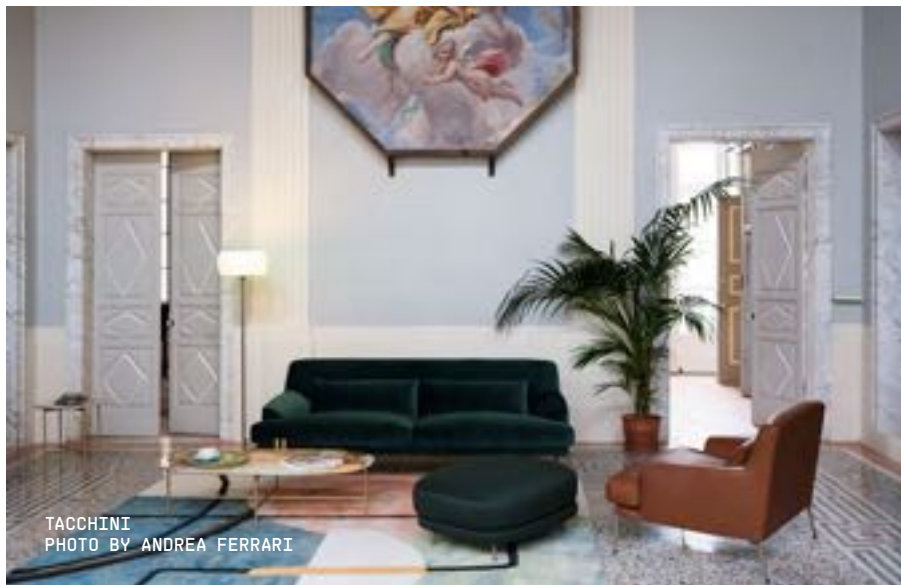
SITIA  
PHOTO BY MM COMPANY



DRIADE  
PHOTO BY IACOPO BARATTIERI



GLAS ITALIA  
ART DIRECTION ALBERTO PELLINI



TACCHINI  
PHOTO BY ANDREA FERRARI



TACCHINI  
PHOTO BY ANDREA FERRARI



HORM  
PHOTO BY GIANNI ANTONIALI



MINIFORMS  
PHOTO BY ADIBO.IT



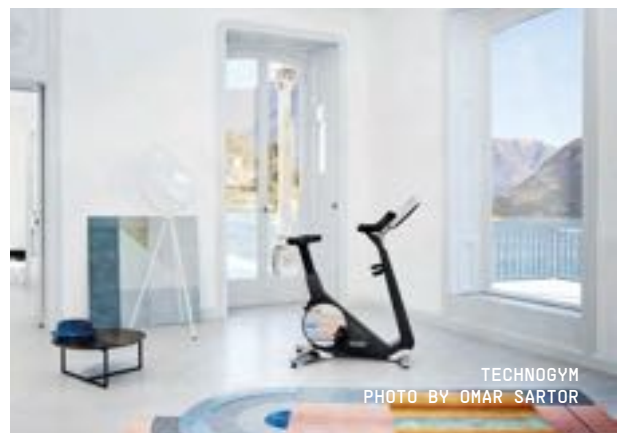
ZANOTTA  
PHOTO BY BEPPE BRANCATO



ZANOTTA  
PHOTO BY ANDREA FERRARI



SABA  
PHOTO BY BEPPE BRANCATO  
STYLING STUDIO MILO



TECHNOGYM  
PHOTO BY OMAR SARTOR



TRUE DESIGN  
PHOTO BY ALBERTO STRADA



SABA  
PHOTO BY BEPPE BRANCATO  
STYLING STUDIO MILO



cc-tapis®

Piazza Santo Stefano, 10  
20122 MILANO  
T. +39 02 89093884  
info@cc-tapis.com  
cc-tapis.com

Spectrum  
Photos by **Alessandro Oliva**  
Art Direction by **Motel 409**  
Set Design and Styling by **Studio MILO**  
Editorial text by **Federico Sarica** editor  
at large of Icon and editor in chief  
of rivista studio.

Highlights  
Main photos by **Jeremias Morandell**  
Cover & details photos by **Ivan Grianti**  
Art Direction by **Motel 409**  
Set Design and Styling by **Studio MILO**  
Photos Spectrum installation  
cc-tapis showroom by **Andrea Bartoluccio**

Daydreaming  
Photos by **Beppe Brancato**  
Styling by **Greta Cevenini**

Milan Affair  
Photos by **Lorenzo Gironi**  
Art Direction by **Motel 409** and **Studio MILO**

Dreams that money can buy  
Photos by **Lorenzo Gironi**  
Art Direction by **Motel 409**

Metroquadro Collection  
Photos by **Silvia Rivoltella**  
Styling by **Greta Cevenini**

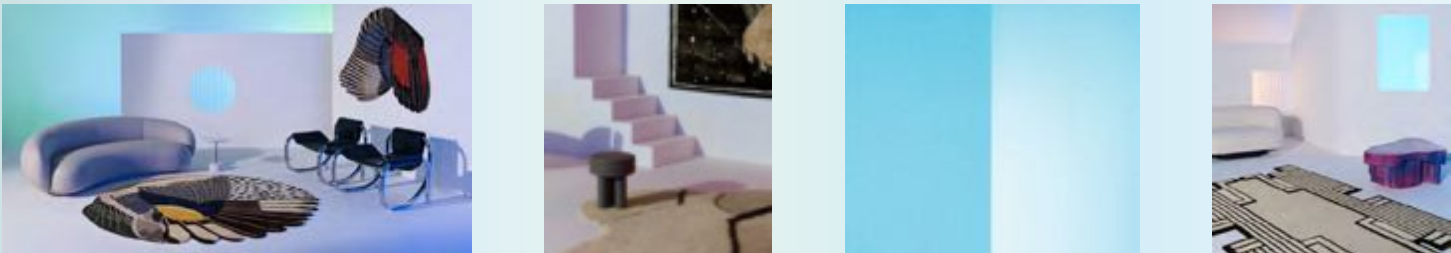
Graphic project by **MM Company**

Printed by **italgraf**

Special thanks to:

Agape  
Agape Casa  
Alias  
Arflex  
Artemide  
Astep  
Atelier de Troupe  
Azucena  
Baxter  
Bredaquaranta  
Cara/Davide  
Cassina  
De Sede  
Driade  
Duccio Maria Gambi  
Fai - Fondo Ambiente Italiano  
Flos  
Gallotti&Radice  
Giobagnara  
Giorgetti  
Glas Italia  
Hagit Pincovici  
Henry Timi  
Imperfetto Lab  
JCP  
Lachance Paris  
Marta Sala  
Matter Made  
Meridiani  
Mingardo  
Molteni&C  
Moroso  
Nahoor  
Nemo Lighting  
Nilufar  
Officine Saffi  
Pietro Russo Design  
Poliform  
Pulpo  
Rossana Orlandi  
Saba Italia  
Simone Fanciullacci  
Six gallery  
Spotti Milano  
Tacchini  
Thonet  
Tubes Radiatori  
Verilin  
Villa Panza  
Vitra

©2019 **cc-tapis®** all rights reserved.  
cc-tapis reserves the rights  
at all time to apply modifications  
for the functional or qualitative  
improvement of its products.  
the color and material samples  
have an indicative value.







**cc-tapis®**

Piazza Santo Stefano, 10  
20122 MILANO